

WAAS CH <b>99727</b> <b>W28A</b>	APP CRS <b>277°</b>	Rwy Idg TDZE Apt Elev	<b>4005</b> <b>637</b> <b>640</b>
--	------------------------	-----------------------------	---

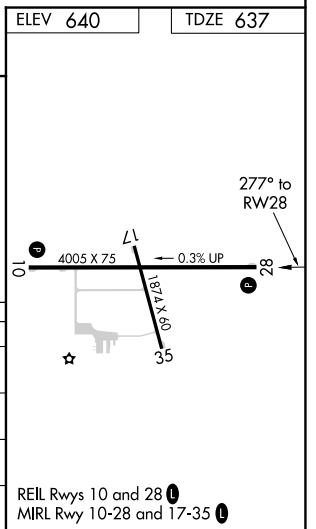
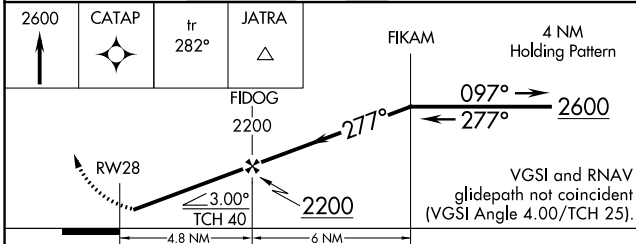
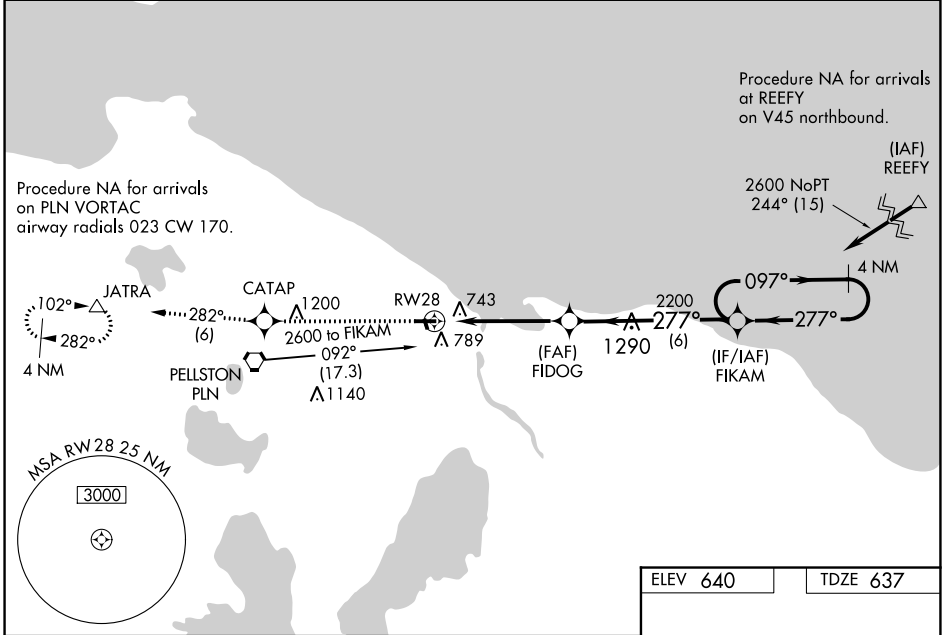
# RNAV (GPS) RWY 28

CHEBOYGAN COUNTY (SLH)

**V** **A** Night landing Rwy 17, 35 NA. Baro-VNAV NA when using Pellston altimeter setting. For uncompensated Baro-VNAV systems, LNAV/VNAV NA below -16°C (4°F) or above 54°C (130°F). DME/DME RNP-0.3 NA. Helicopter visibility reduction below ¾ SM NA. When local altimeter setting not received, use Pellston altimeter setting and increase all DA 41 feet and all MDA 60 feet and increase LNAV/VNAV all Cats visibility ¼ mile and LNAV Cat C visibility ½ mile.

MISSED APPROACH: Climb to 2600 direct CATAP and on track 282° to JATRA and hold.

AWOS-3 <b>118.175</b>	MINNEAPOLIS CENTER <b>134.6 354.05</b>	UNICOM <b>122.8 (CTAF)</b>	<b>122.5</b> <b>⓪</b>
--------------------------	---	-------------------------------	-----------------------



CATEGORY	A	B	C	D
LPV DA	887-1	250 (300-1)		NA
LNAV/VNAV DA	953-1	316 (400-1)		NA
LNAV MDA	1060-1	423 (500-1)	1060-1¼ 423 (500-1¼)	NA
CIRCLING	1140-1	500 (500-1)	1140-1½ 500 (500-1½)	NA

EC-1, 10 SEP 2020 to 08 OCT 2020

EC-1, 10 SEP 2020 to 08 OCT 2020