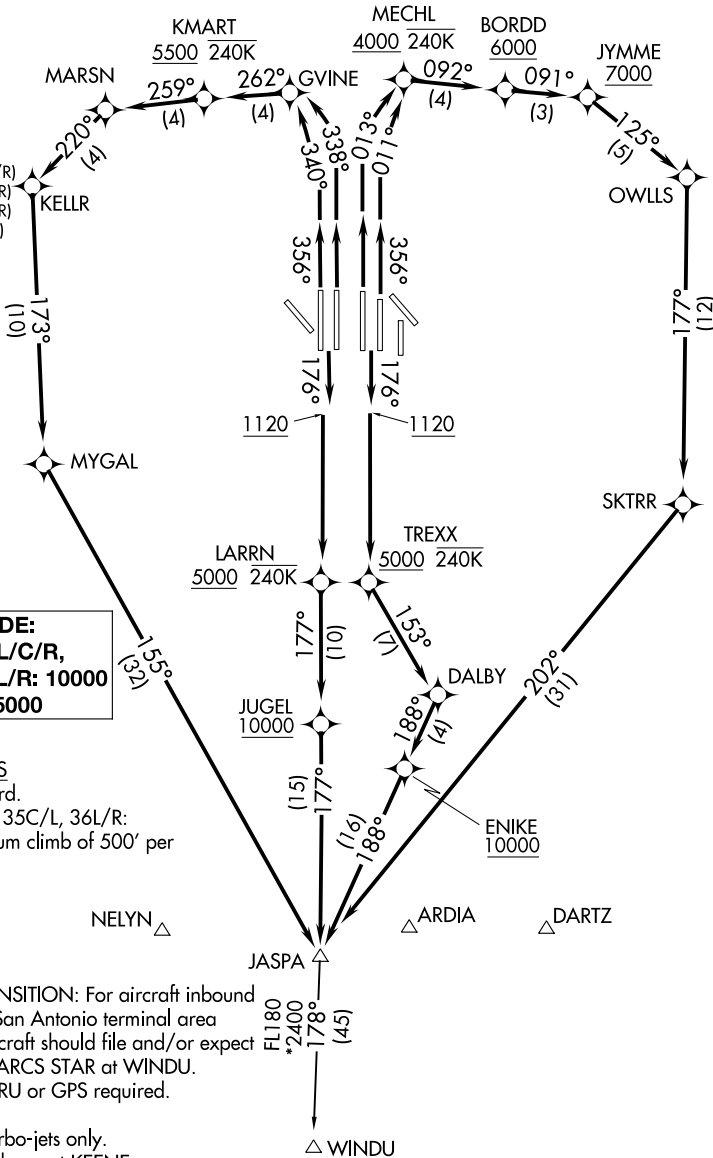


JASPA SIX DEPARTURE (RNAV)

D-ATIS DEP 135.925
 CLNC DEL 128.25
 CPDLC
 GND CON
 121.65 121.8 (EAST)
 121.85 (WEST)
 DFW TOWER
 126.55 127.5 (EAST)
 124.15 134.9 (WEST)
 REGIONAL DEP CON
 125.125 353.95 (Rwy 17C/R)
 125.125 353.95 (Rwy 18L/R)
 126.475 363.15 (Rwy 36L/R)
 118.55 290.35 (Rwy 35L/C)



TOP ALTITUDE:
RWY 13L/R, 17L/C/R,
18L/R, 35L/C/R, 36L/R: 10000
RWY 31L/R: 5000

TAKEOFF MINIMUMS
 Rws 31L/R: Standard.
 Rws 17C/R, 18L/R, 35C/L, 36L/R:
 Standard with minimum climb of 500' per
 NM to 1120.

- NOTE: WINDU TRANSITION: For aircraft inbound to Austin or San Antonio terminal area airports. Aircraft should file and/or expect BLEWE or MARCS STAR at WINDU.
- NOTE: DME/DME/IRU or GPS required.
- NOTE: RNAV 1.
- NOTE: For use by turbo-jets only.
- NOTE: Props file and expect KEENE or TRI-GATE DEPARTURE.
- NOTE: RADAR required.

NOTE: Chart not to scale.

(NARRATIVE ON FOLLOWING PAGE)

SC-2, 10 SEP 2020 to 08 OCT 2020

SC-2, 10 SEP 2020 to 08 OCT 2020