

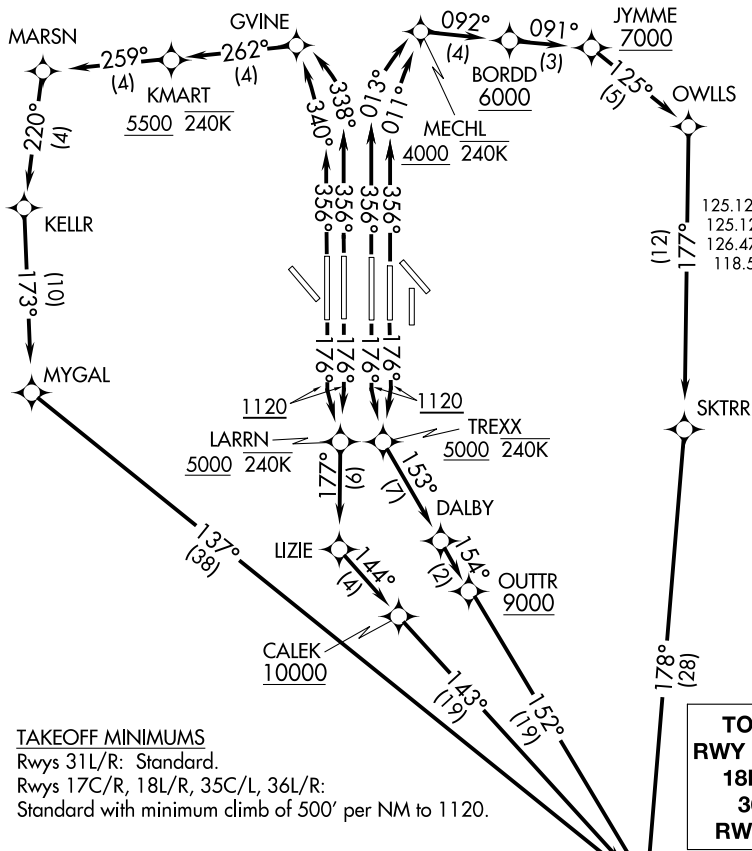
(DARTZ8.DARTZ) 19283

AL-6039 (FAA)

DALLAS-FORT WORTH INTL (DFW)

DARTZ EIGHT DEPARTURE (RNAV)

DALLAS-FORT WORTH, TEXAS



D-ATIS DEP 135.925
 CLNC DEL 128.25
 CPDLC
 GND CON
 121.65 121.8 (EAST)
 121.85 (WEST)
 DFW TOWER
 126.55 127.5 (EAST)
 124.15 134.9 (WEST)
 REGIONAL DEP CON
 125.125 353.95 (Rwy 17C/R)
 125.125 353.95 (Rwy 18L/R)
 126.475 363.15 (Rwy 36L/R)
 118.55 290.35 (Rwy 35L/C)

TAKEOFF MINIMUMS
 Rwy 31L/R: Standard.
 Rwy 17C/R, 18L/R, 35C/L, 36L/R:
 Standard with minimum climb of 500' per NM to 1120.

TOP ALTITUDE:
 RWY 13L/R, 17L/C/R,
 18L/R, 35L/C/R,
 36L/R: 10000
 RWY 31L/R: 5000

NELYN △ JASPA △ ARDIA △

- NOTE: BILEE TRANSITION: For aircraft overlying BILEE intersection on J87 to overfly TNV VOR/DME.
- NOTE: TORNN TRANSITION: For aircraft overlying TORNN intersection, then on the appropriate RNAV STAR to George Bush Intercontinental, Lone Star Executive, or David Wayne Hooks Memorial airports. Also for aircraft landing in the Lafayette, Lake Charles, or Beaumont/Port Arthur terminal areas.
- NOTE: DME/DME/IRU or GPS required.
- NOTE: RNAV 1.
- NOTE: For use by turbo-jets only.
- NOTE: RADAR required.

NOTE: Chart not to scale.

(NARRATIVE ON FOLLOWING PAGE)

DARTZ EIGHT DEPARTURE (RNAV)

(DARTZ8.DARTZ) 10OCT19

DALLAS-FORT WORTH, TEXAS

DALLAS-FORT WORTH INTL (DFW)

SC-2, 10 SEP 2020 to 08 OCT 2020

SC-2, 10 SEP 2020 to 08 OCT 2020