

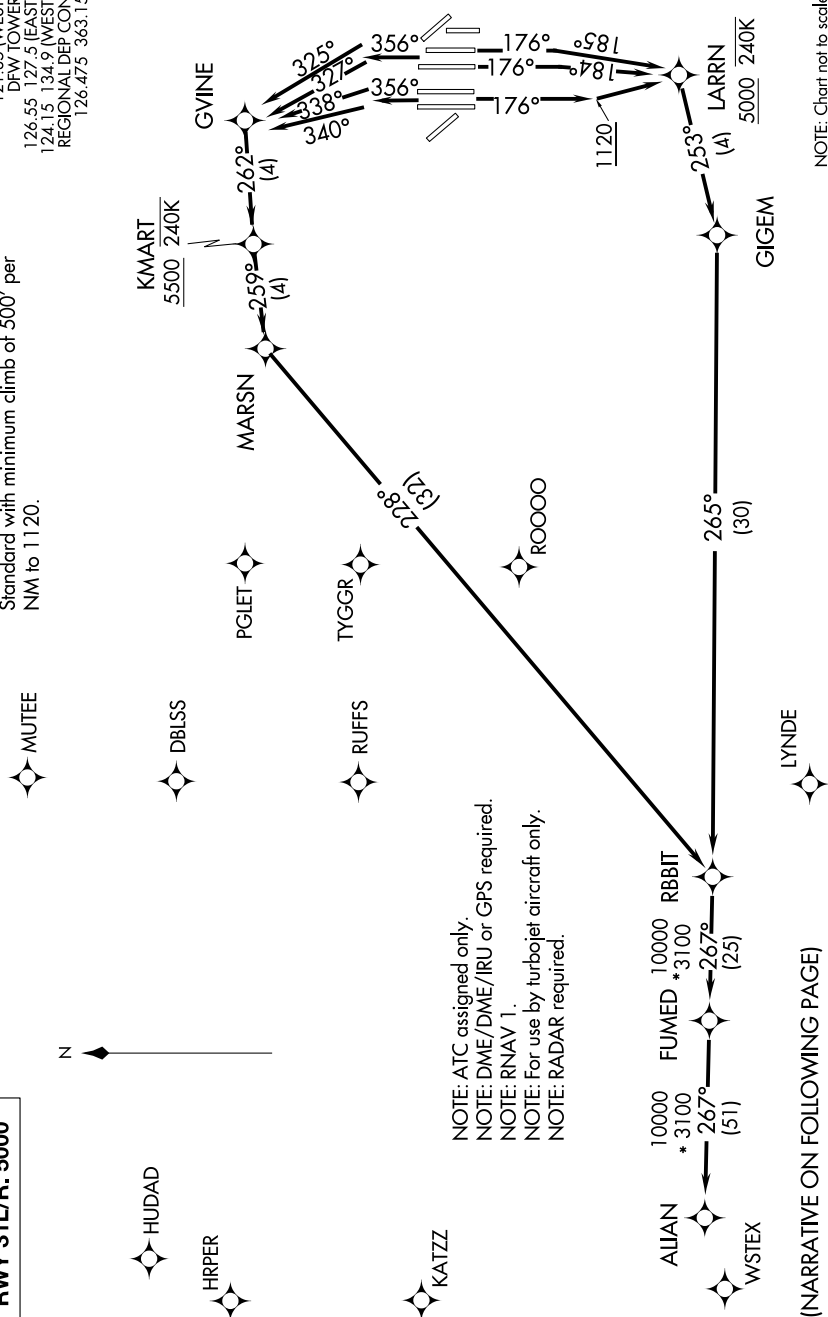
ALIAN TWO DEPARTURE (RNAV)

SC-2, 10 SEP 2020 to 08 OCT 2020

TOP ALTITUDE:
 RWY 17C/R, 18L/R,
 35C/L, 36L/R: 10000
 RWY 31L/R: 5000

TAKEOFF MINIMUMS
 Rwy 31L/R: Standard
 Rwy 17C/R, 18L/R, 35L/C, 36L/R:
 Standard with minimum climb of 500' per
 NM to 1120.

D-ATIS DEP 135.925
 CLNC DEL 128.25
 CPDLC
 GND CON
 121.65 121.8 (EAST)
 121.85 (WEST)
 DFW TOWER
 126.55 127.5 (EAST)
 124.15 134.9 (WEST)
 REGIONAL DEP CON
 126.475 363.15



NOTE: ATC assigned only.
 NOTE: DME/DME/IRU or GPS required.
 NOTE: RNAV 1.
 NOTE: For use by turbojet aircraft only.
 NOTE: RADAR required.

(NARRATIVE ON FOLLOWING PAGE)

NOTE: Chart not to scale

SC-2, 10 SEP 2020 to 08 OCT 2020