

APP CRS 329°	Rwy Idg TDZE Apt Elev	4004 811 811
------------------------	-----------------------------	---

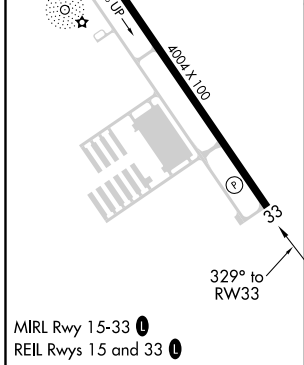
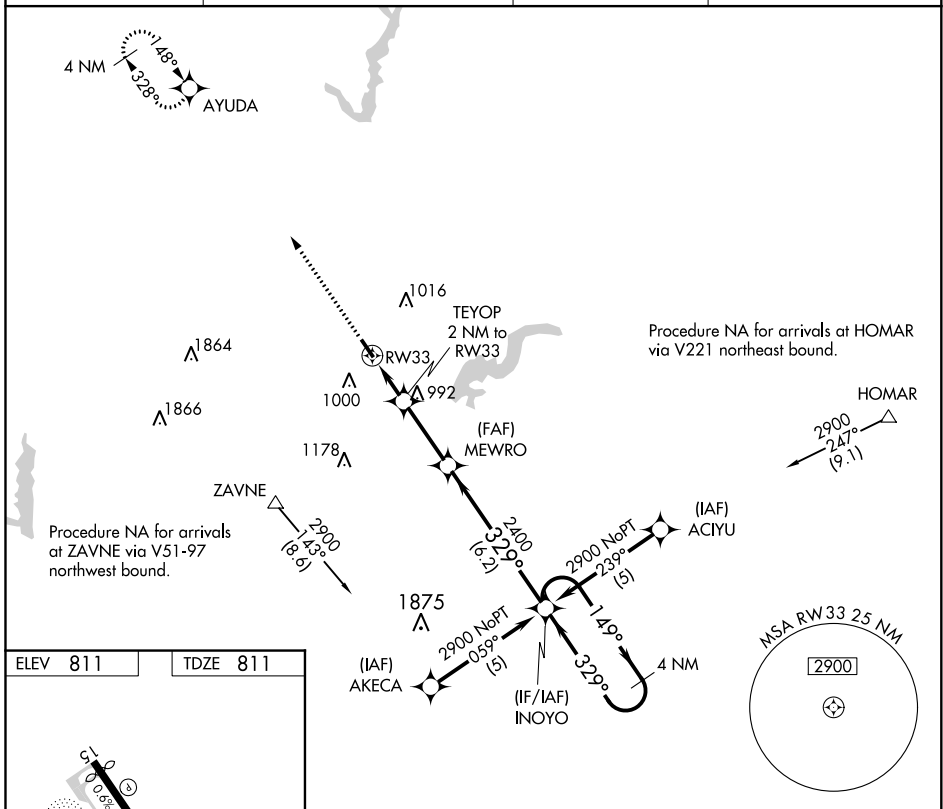
RNAV (GPS) RWY 33

INDIANAPOLIS METROPOLITAN (UMP)

▽ DME/DME RNP-0.3 NA. When local altimeter setting not received, use Indianapolis Intl altimeter setting and increase all MDA 60 feet and LNAV Cat C visibility ¼ mile. VDP NA when using Indianapolis Intl altimeter setting. Rwy 33 helicopter visibility reduction below ¾ SM NA.

△ NA MISSED APPROACH: Climb to 2500 direct AYUDA and hold.

AWOS-3 119.375	INDIANAPOLIS APP CON 127.15 317.8	CLNC DEL 121.625	UNICOM 123.0 (CTAF) 0
--------------------------	---	----------------------------	---------------------------------



2500	AYUDA	VGSIs and descent angles not coincident (VGSi Angle 3.50/TCH 27).		4 NM Holding Pattern
		TEYOP 2 NM to RW33	MEWRO	INOYO
		RW33 1.1 NM to RW33	2400	2900
		1480	329°	149°
		1.1 NM	0.9 NM	2.8 NM
		≤3.04°	TCH 40	6.2 NM
CATEGORY	A	B	C	D
LNAV MDA	1260-1	449 (500-1)	1260-1¼ 449 (500-1¼)	NA
C CIRCLING	1320-1 509 (600-1)	1340-1 529 (600-1)	1340-1½ 529 (600-1½)	NA

EC-2, 10 SEP 2020 to 08 OCT 2020

EC-2, 10 SEP 2020 to 08 OCT 2020