

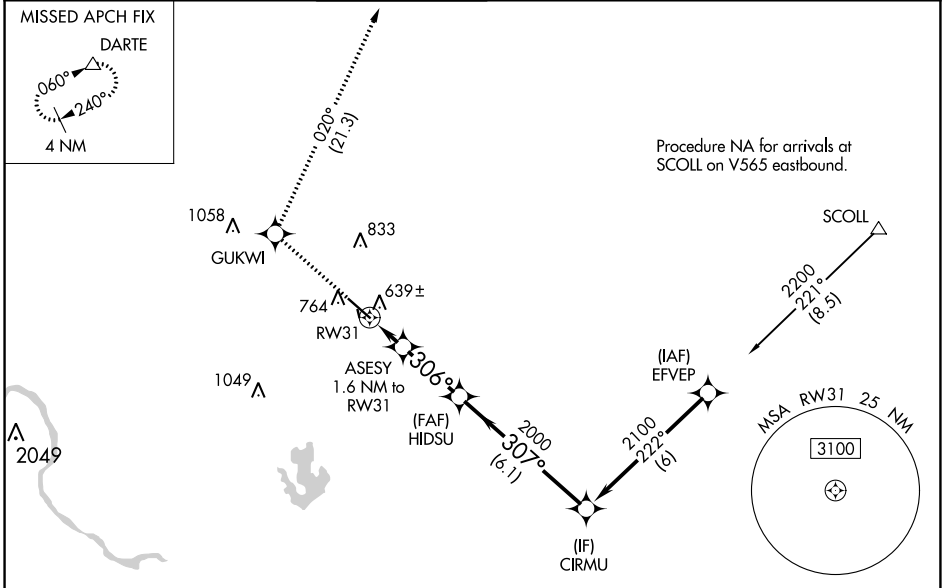
WAAS CH 45916 W31A	APP CRS 306°	Rwy Idg 6025 TDZE 612 Apt Elev 620
--	------------------------	---

RNAV (GPS) RWY 31

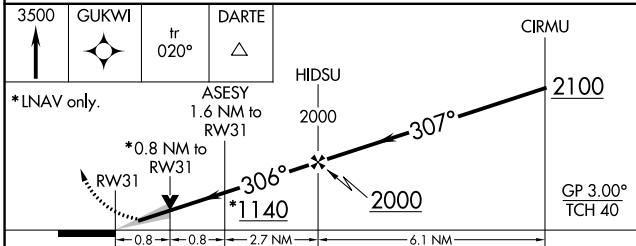
AUSTIN EXECUTIVE (EDC)

RNP APCH.		<p>⚠ Baro-VNAV NA when using Austin-Bergstrom Intl altimeter setting. For uncompensated Baro-VNAV systems, LNAV/VNAV NA below -16°C or above 54°C. When local altimeter setting not received, use Austin-Bergstrom Intl altimeter setting and increase all DA 42 feet; increase all MDA 60 feet. Increase LNAV/VNAV all Cats visibility 1/8 SM. VDP NA with Austin-Bergstrom Intl altimeter setting. Circling NA to Rwy 16, 34.</p>		<p>MISSED APPROACH: Climb to 3500 direct GUKWI and on track 020° to DARTE and hold.</p>	
-----------	--	--	--	---	--

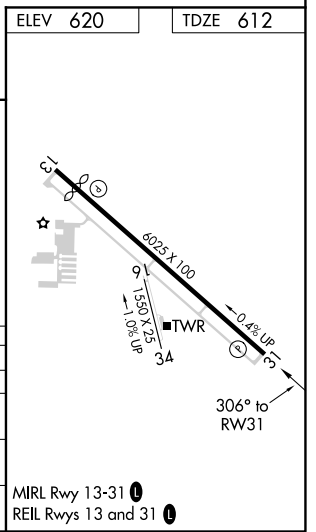
AWOS-3 118.825	APP CON 127.225 317.65	EXECUTIVE TOWER* 120.3 (CTAF) 0	GND CON 119.45	CINC DEL 126.025 (when tower closed)	UNICOM 122.975
--------------------------	----------------------------------	--	--------------------------	---	--------------------------



ELEV 620	TDZE 612
----------	----------



CATEGORY	A	B	C	D
LPV DA		812-3/4	200 (200-3/4)	
LNAV/VNAV DA		909-7/8	297 (300-7/8)	
LNAV MDA		900-1	288 (300-1)	
CIRCLING	1140-1	1160-1	1160-1 1/2	1220-2
	520 (600-1)	540 (600-1)	540 (600-1 1/2)	600 (600-2)



SC-3, 10 SEP 2020 to 08 OCT 2020

SC-3, 10 SEP 2020 to 08 OCT 2020