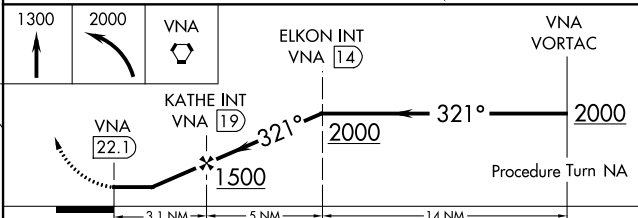
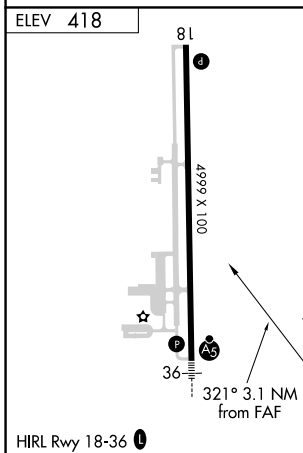
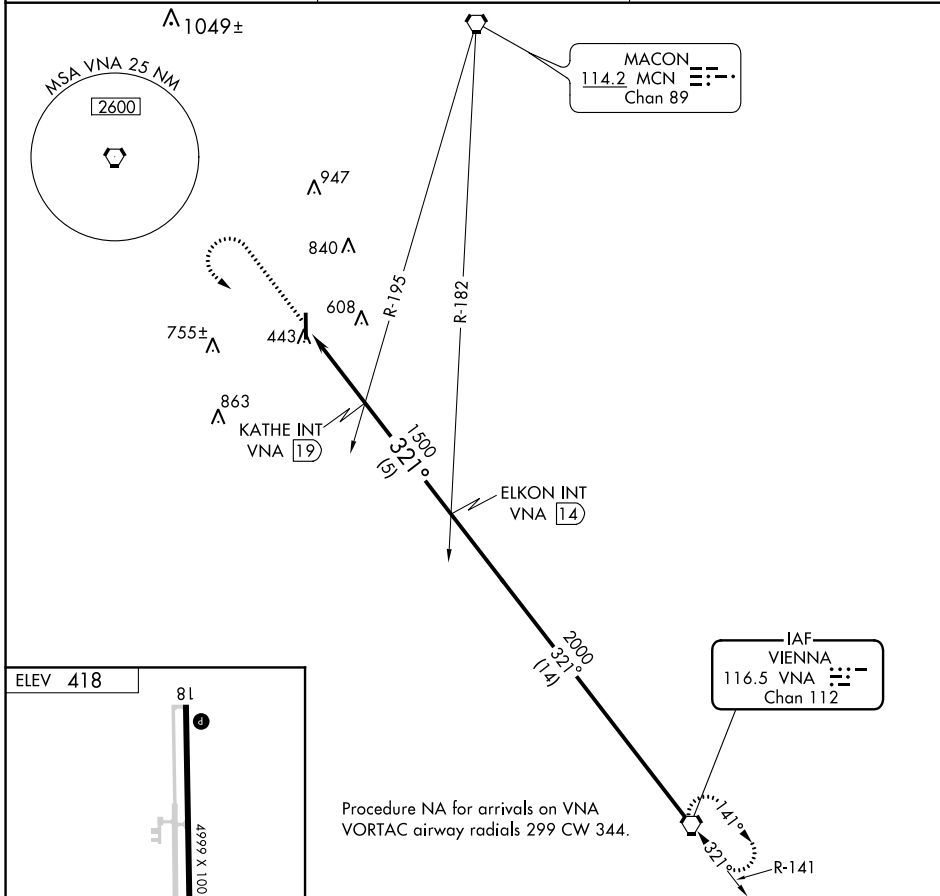


VORTAC VNA <b>116.5</b> Chan <b>112</b>	APP CRS <b>321°</b>	Rwy Idg TDZE Apt Elev	<b>N/A</b> <b>N/A</b> <b>418</b>
---	------------------------	-----------------------------	--

**VOR-A**  
PERRY-HOUSTON COUNTY (PXE)

**NA** If local altimeter setting not received, use Macon altimeter setting and increase all MDAs 40 feet. **MISSED APPROACH:** Climb to 1300 then climbing left turn to 2000 direct VNA VORTAC and hold.

AWOS-3 <b>123.825</b>	ATLANTA APP CON★ <b>124.2 279.6</b>	UNICOM <b>122.725 (CTAF)</b>
--------------------------	--	---------------------------------



FAF to MAP 3.1 NM						
Knots	60	90	120	150	180	
Min:Sec	3:06	2:04	1:33	1:14	1:02	
CATEGORY	A		B		C	D
CIRCLING	880-1		462 (500-1)		880-1½	980-2
					462 (500-1½)	562 (600-2)

SE-4, 10 SEP 2020 to 08 OCT 2020

SE-4, 10 SEP 2020 to 08 OCT 2020