

LOC/DME I-PVG <b>110.75</b> Chan <b>44 (Y)</b>	APP CRS <b>102°</b>	Rwy Idg TDZE <b>28</b> Apt Elev <b>28</b>	<b>5350</b>
--	------------------------	---	-------------

# ILS or LOC RWY 10

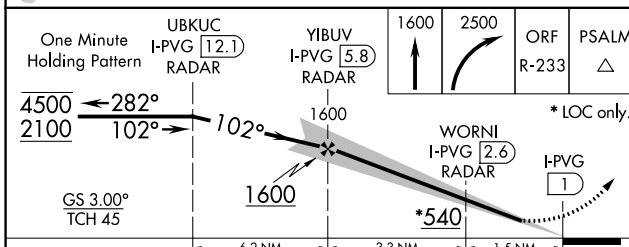
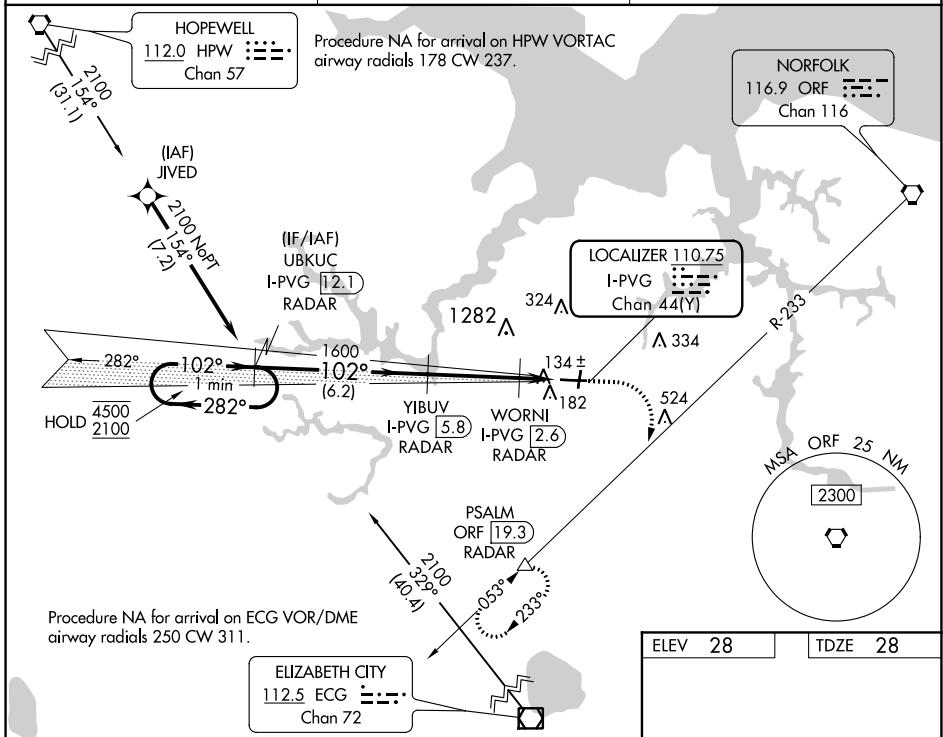
HAMPTON ROADS EXECUTIVE (PVG)

RNAV 1-GPS or RADAR required for procedure entry. DME or RADAR required.

**MISSED APPROACH:** Climb to 1600 then climbing right turn to 2500 on ORF VORTAC R-233 to PSALM/ORF 19.3 DME/RADAR and hold.

**⚠ NA** Circling NA to Rwy 2 and 20.  
Circling NA for Cat C north of Rwy 10-28.

AWOS-3PT <b>118.375</b>	NORFOLK APP CON <b>118.9 353.7</b>	UNICOM <b>122.725 (CTAF) 0</b>
----------------------------	---------------------------------------	-----------------------------------



ELEV 28	TDZE 28
---------	---------

HIRL Rwy 10-28 **1**  
REIL Rwy 10 and 28 **1**  
MIRL Rwy 2-20 **1**

FAF to MAP 4.8 NM

Knots	60	90	120	150	180
Min:Sec	4:48	3:12	2:24	1:55	1:36

NE-3, 10 SEP 2020 to 08 OCT 2020

NE-3, 10 SEP 2020 to 08 OCT 2020