

VORTAC MAW <b>111.2</b> Chan <b>49</b>	APP CRS <b>194°</b>	Rwy Idg TDZE Apt Elev	<b>5000</b> <b>262</b> <b>262</b>
--	------------------------	-----------------------------	---

# VOR/DME RWY 20

KENNETT MEMORIAL (TKX)

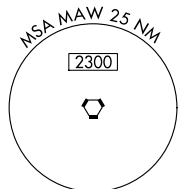
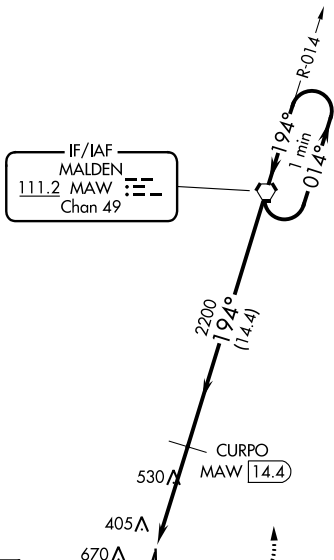
**⚠** Circling to Rwy 18-36 NA at night. Circling NA west of Rwy 2 and 18.  
**⚠ NA** When local altimeter setting not received, use Blytheville altimeter setting and increase all MDA 60 feet; increase all Cat C/D visibility 1/4 mile.  
 Helicopter visibility reduction below 3/4 SM NA.

**MISSED APPROACH:** Climbing left turn to 3000 direct MAW VORTAC and hold.

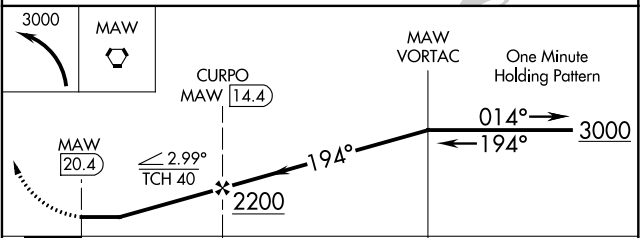
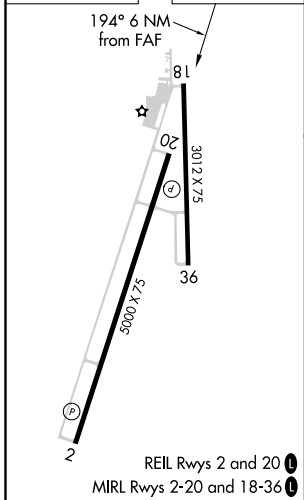
AWOS-3PT <b>119.05</b>	MEMPHIS CENTER <b>120.075 289.4</b>	UNICOM <b>122.8 (CTAF) 0</b>
---------------------------	--	---------------------------------

**⚠1231**

NoPT for arrival on MAW VORTAC  
airway radials 316 CW 059.



ELEV <b>262</b>	TDZE <b>262</b>
-----------------	-----------------



CATEGORY	A	B	C	D
S-20	900-1	638 (700-1)	900-1 7/8	638 (700-1 7/8)
<b>C</b> CIRCLING	900-1	638 (700-1)	900-1 7/8	900-2 638 (700-2)

NC-3, 10 SEP 2020 to 08 OCT 2020

NC-3, 10 SEP 2020 to 08 OCT 2020