

WAAS CH 42635 W20A	APP CRS 198°	Rwy Idg TDZE Apt Elev	5000 262 262
--	------------------------	-----------------------------	---

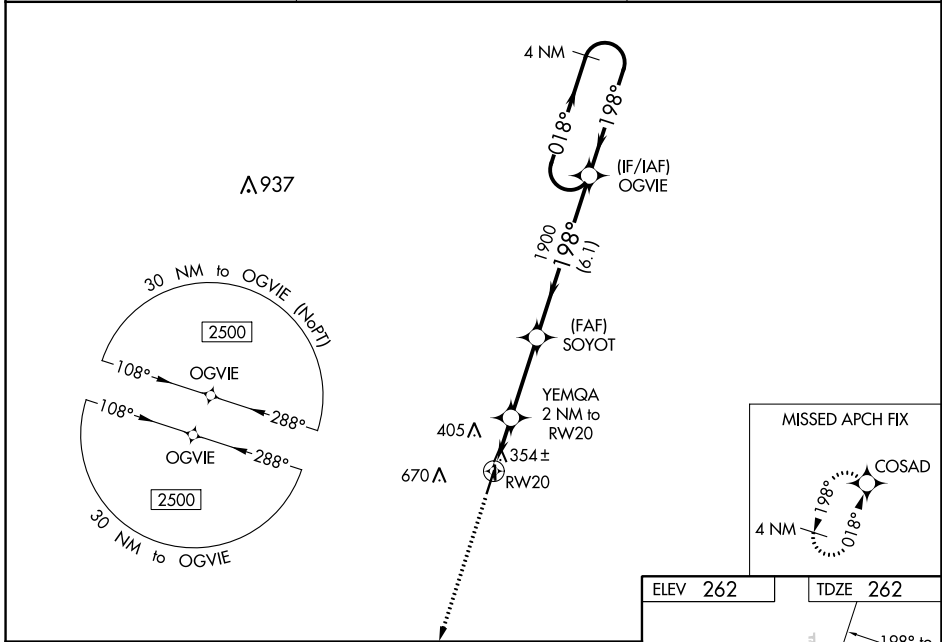
RNAV (GPS) RWY 20

KENNETT MEMORIAL (TKX)

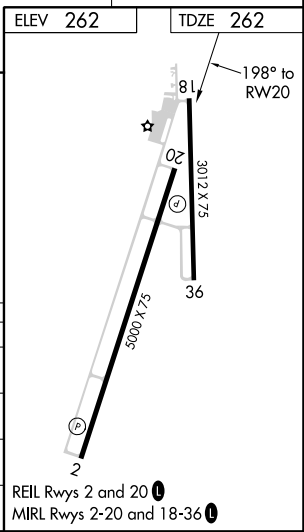
∇ Circling to Rwy 18/36 NA at night. For uncompensated Baro-VNAV systems, LNAV/VNAV NA below -16°C (4°F) or above 54°C (130°F). Circling NA west of Rwy 2 and 18.
Δ NA DME/DME RNP-0.3 NA. When local altimeter setting not received, use Blytheville altimeter setting and increase all DA 47 feet and all MDA 60 feet; increase LPV visibility 1/8 mile all Cats; increase LNAV/VNAV visibility 1/4 mile all Cats; increase LNAV Cat C/D and Circling Cat D visibility 1/4 mile. Helicopter visibility reduction below 3/4 SM NA. VDP and Baro-VNAV NA when using Blytheville Muni altimeter setting.

MISSED APPROACH: Climb to 2500 direct COSAD and hold.

AWOS-3PT 119.05	MEMPHIS CENTER 120.075 289.4	UNICOM 122.8 (CTAF) 0
---------------------------	--	---------------------------------



2500 COSAD	SOYOT	OGIE	4 NM Holding Pattern	
YEMQA 2 NM to RW20	1900	OGIE 1900	018° → 2500	← 198°
1 NM to RW20	920	198°	1900	GP 3.00° TCH 40
RW20	1 NM	1 NM	3 NM	6.1 NM
CATEGORY	A	B	C	D
LPV DA		554-1	292 (300-1)	
LNAV/VNAV DA		602-1 1/8	340 (400-1 1/8)	
LNAV MDA		620-1	358 (400-1)	
C CIRCLING	660-1 398 (400-1)	720-1 458 (500-1)	720-1 1/2 458 (500-1 1/2)	900-2 638 (700-2)



NC-3, 10 SEP 2020 to 08 OCT 2020

NC-3, 10 SEP 2020 to 08 OCT 2020