

APP CRS <b>275°</b>	Rwy Idg <b>5003</b>
	TDZE <b>806</b>
	ApI Elev <b>806</b>

# RNAV (GPS) RWY 27

HUNTINGTON MUNI (HHG)

RNP APCH.

**⚠** Rwy 27 helicopter visibility reduction below 3/4 SM NA.

MISSED APPROACH: Climb to 1700 then climbing right turn to 2600 direct IDXOH and hold.

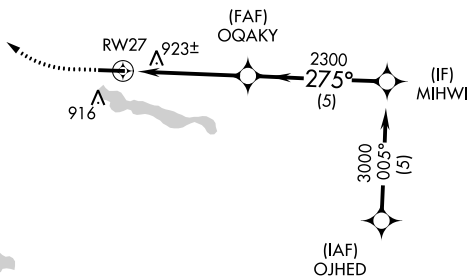
AWOS-3PT  
**126.575**

FORT WAYNE APP CON  
**127.2 284.6**

UNICOM  
**122.8 (CTAF) 0**

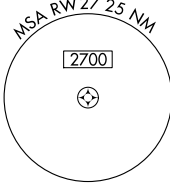
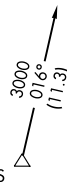


▲ 1182

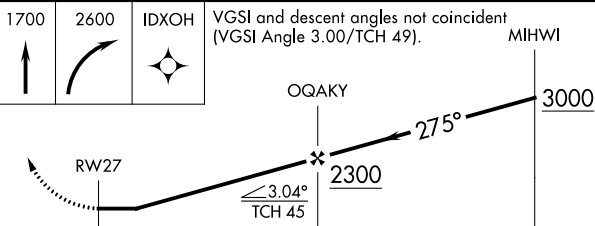
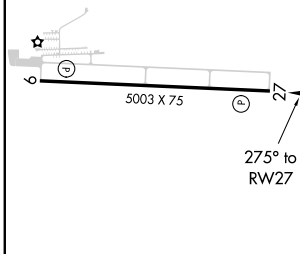


▲ 1397

Procedure NA for arrivals at AJAYS on V221 southbound.



ELEV 806 TDZE 806



CATEGORY	A	B	C	D
LNAV MDA	1200-1	394 (400-1)	1200-1 1/8 394 (400-1 1/8)	1200-1 1/4 394 (400-1 1/4)
<b>C</b> CIRCLING	1300-1	494 (500-1)	1460-1 3/4 654 (700-1 3/4)	1540-2 1/4 734 (800-2 1/4)

MIRL Rwy 9-27 **0**  
REIL Rws 9 and 27 **0**

EC-2, 10 SEP 2020 to 08 OCT 2020

EC-2, 10 SEP 2020 to 08 OCT 2020