

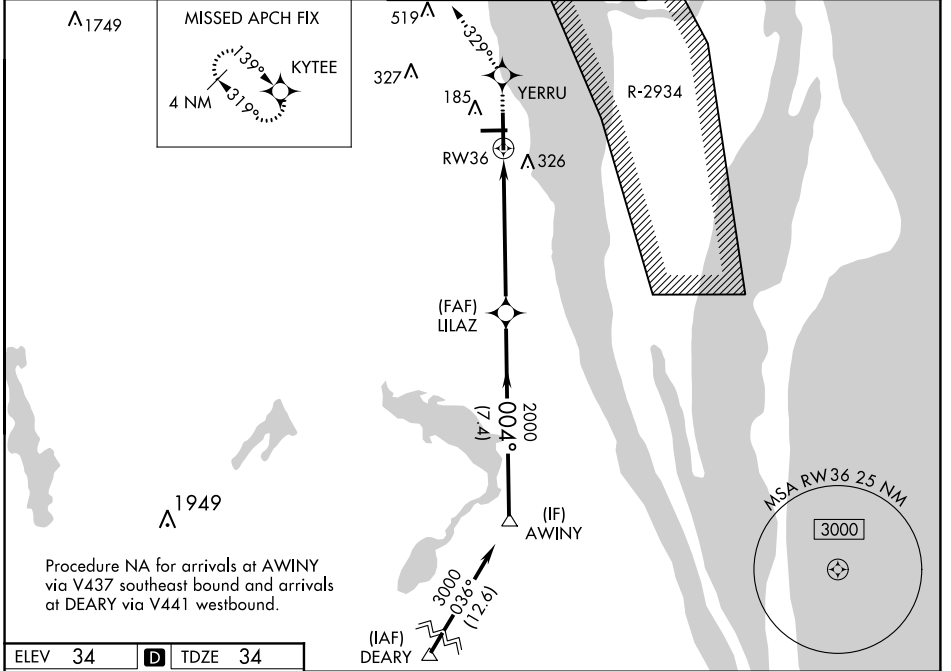
WAAS CH 69313 W36A	APP CRS 004°	Rwy Idg 7244 TDZE 34 Apt Elev 34
--	------------------------	---

RNAV (GPS) RWY 36

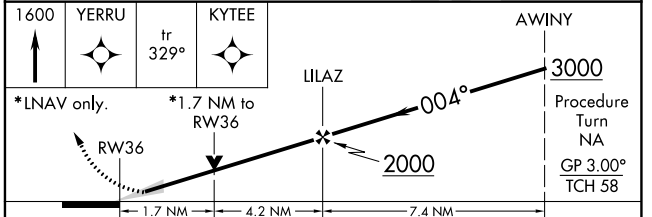
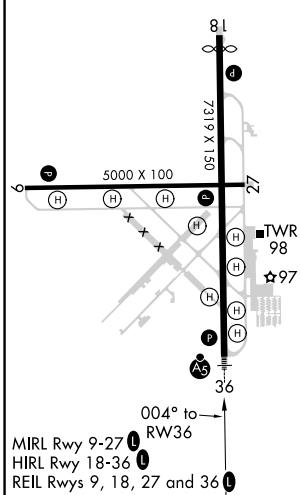
SPACE COAST RGNL (TIX)

<p>▽ DME/DME RNP-0.3 NA. ▲ When control tower closed, use Melbourne altimeter setting. VDP NA when using Melbourne altimeter setting.</p>	<p>MALSR </p>	<p>MISSED APPROACH: Climb to 1600 direct YERRU and via track 329° to KYTEE and hold.</p>
---	-------------------	--

<p>ATIS 120.625</p>	<p>ORLANDO APP CON 134.95 281.425</p>	<p>SPACE COAST TOWER * 118.9 (CTAF) 0</p>	<p>GND CON 121.85</p>	<p>UNICOM 122.95</p>
--------------------------------	--	--	----------------------------------	---------------------------------



ELEV 34	D	TDZE 34
---------	----------	---------



		A		B		C		D	
CATEGORY									
LPV	DA	234-1/2		200 (200-1/2)					
LNAV MDA		640-1/2	606 (700-1/2)	640-1 1/4	606 (700-1 1/4)	640-1 1/2	606 (700-1 1/2)		
CIRCLING		640-1	606 (700-1)	640-1 3/4	606 (700-1 3/4)	640-2	606 (700-2)		
MELBOURNE ALTIMETER SETTING MINIMUMS									
LPV	DA	294-1/2		260 (300-1/2)					
LNAV MDA		700-1/2	666 (700-1/2)	700-1 1/4	666 (700-1 1/4)	700-1 1/2	666 (700-1 1/2)		
CIRCLING		700-1	666 (700-1)	700-1 3/4	666 (700-1 3/4)	700-2	666 (700-2)		

SE-3, 10 SEP 2020 to 08 OCT 2020

SE-3, 10 SEP 2020 to 08 OCT 2020