

(STYCK7.STYCK) 19115

AL-5757 (FAA)

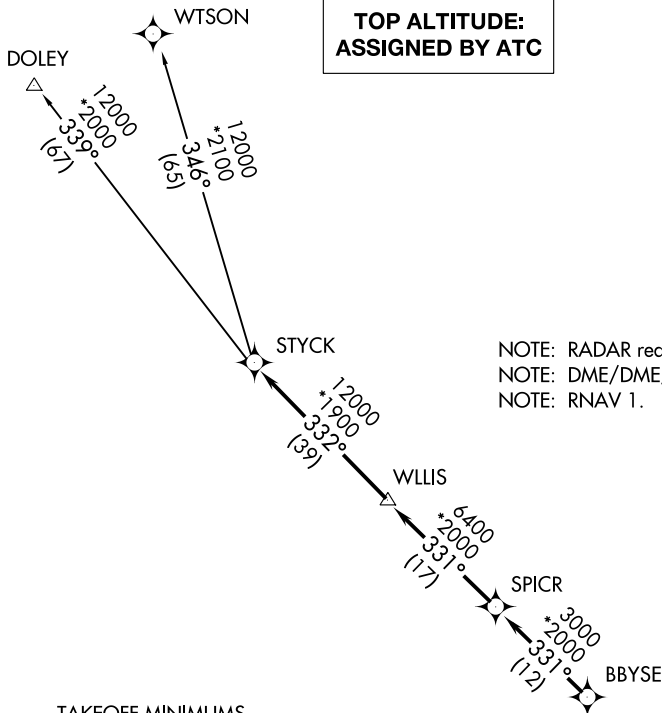
BAYTOWN (HPY)

STYCK SEVEN DEPARTURE (RNAV)

BAYTOWN, TEXAS

**TOP ALTITUDE:
ASSIGNED BY ATC**

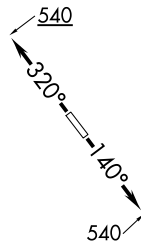
CTAF
122.8
HOUSTON DEP CON
134.45 284.0



NOTE: RADAR required.
NOTE: DME/DME/IRU or GPS required.
NOTE: RNAV 1.

TAKEOFF MINIMUMS

Rwys 14, 32: Standard with minimum climb of 500' per NM to 540.



NOTE: Chart not to scale.

DEPARTURE ROUTE DESCRIPTION

TAKEOFF RWY 14: Climb heading 140° to 540 for RADAR vectors to BBYSE, thence . . .

TAKEOFF RWY 32: Climb heading 320° to 540 for RADAR vectors to BBYSE, thence . . .

. . . on track 331° to SPICR, then on track 331° to WLLIS, then on track 332° to STYCK, then on (transition). Maintain ATC assigned altitude. Expect filed altitude 10 minutes after departure.

DOLEY TRANSITION (STYCK7.DOLEY)

WTSON TRANSITION (STYCK7.WTSON)

STYCK SEVEN DEPARTURE (RNAV)

(STYCK7.STYCK) 25APR19

BAYTOWN, TEXAS
BAYTOWN (HPY)

SC-5, 10 SEP 2020 to 08 OCT 2020

SC-5, 10 SEP 2020 to 08 OCT 2020