

KARR SIX DEPARTURE (RNAV)

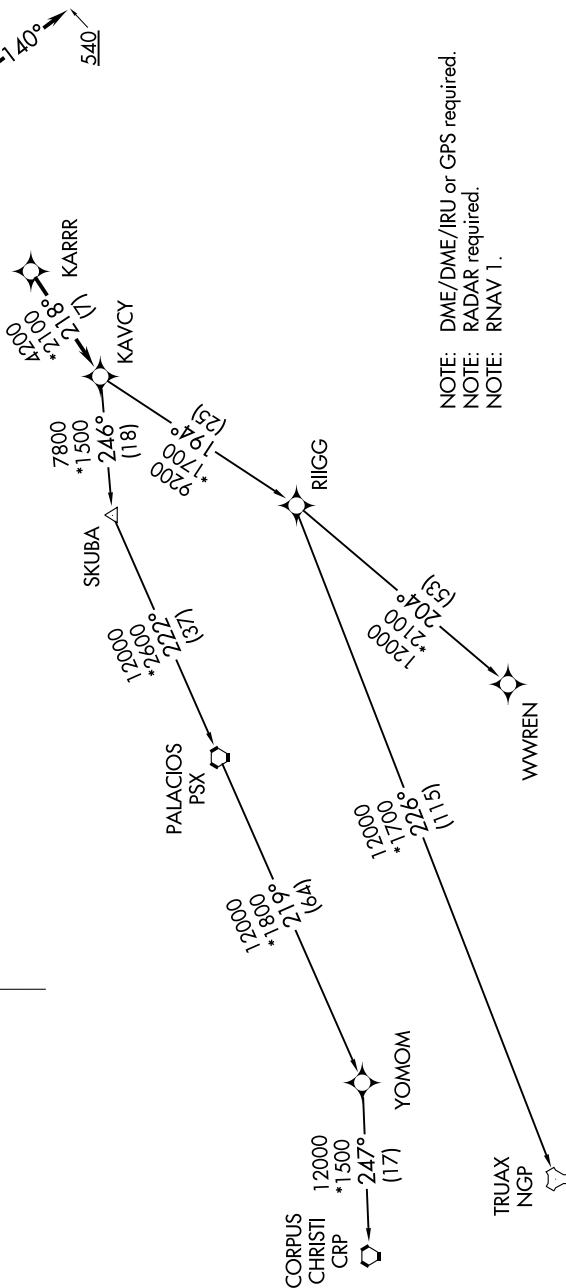
**TOP ALTITUDE:
ASSIGNED BY ATC**

TAKEOFF MINIMUMS

Rwys 14, 32:

Standard with minimum climb of 500' per NM to 540.

CTAF
122.8
HOUSTON DEP CON
134.45 284.0



NOTE: DME/DME/IRU or GPS required.
NOTE: RADAR required.
NOTE: RNAV 1.

NOTE: Chart not to scale.

(NARRATIVE ON FOLLOWING PAGE)

KARR SIX DEPARTURE (RNAV)