

(INDIE7.INDIE) 19115

AL-5757 (FAA)

BAYTOWN (HPY)  
BAYTOWN, TEXAS

# INDIE SEVEN DEPARTURE (RNAV)

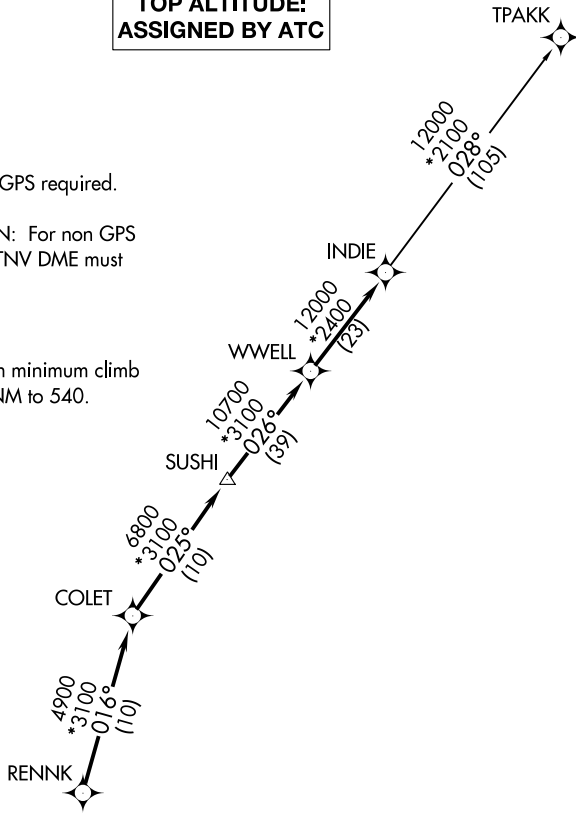
CTAF  
122.8  
HOUSTON DEP CON  
134.45 284.0

**TOP ALTITUDE:  
ASSIGNED BY ATC**

- NOTE: RADAR required.
- NOTE: DME/DME/IRU or GPS required.
- NOTE: RNAV 1.
- NOTE: TPAKK TRANSITION: For non GPS equipped aircraft TNV DME must be operational.

### TAKEOFF MINIMUMS

Rwy 14, 32: Standard with minimum climb of 500' per NM to 540.



SC-5, 10 SEP 2020 to 08 OCT 2020

SC-5, 10 SEP 2020 to 08 OCT 2020

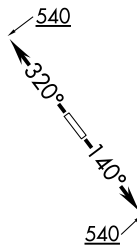
### DEPARTURE ROUTE DESCRIPTION

**TAKEOFF RWY 14:** Climb heading 140° to 540 for RADAR vectors to RENNK, thence . . . .

**TAKEOFF RWY 32:** Climb heading 320° to 540 for RADAR vectors to RENNK, thence . . . .

. . . . on track 016° to COLET, then on track 025° to SUSHI, then on track 026° to WWELL, then on track 026° to INDIE, then on (transition). Maintain ATC assigned altitude. Expect filed altitude 10 minutes after departure.

TPAKK TRANSITION (INDIE7.TPAKK)



NOTE: Chart not to scale.

**INDIE SEVEN DEPARTURE (RNAV)**  
(INDIE7.INDIE) 25APR19

BAYTOWN, TEXAS  
BAYTOWN (HPY)