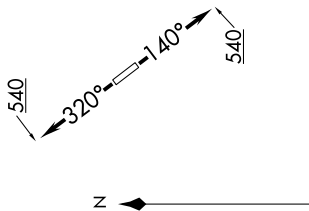


SC-5, 10 SEP 2020 to 08 OCT 2020

CTAF
 122.8
 HOUSTON DEP CON
 134.45 284.0



NOTE: RNAV 1.

NOTE: RADAR required.

NOTE: ATC assigned only.

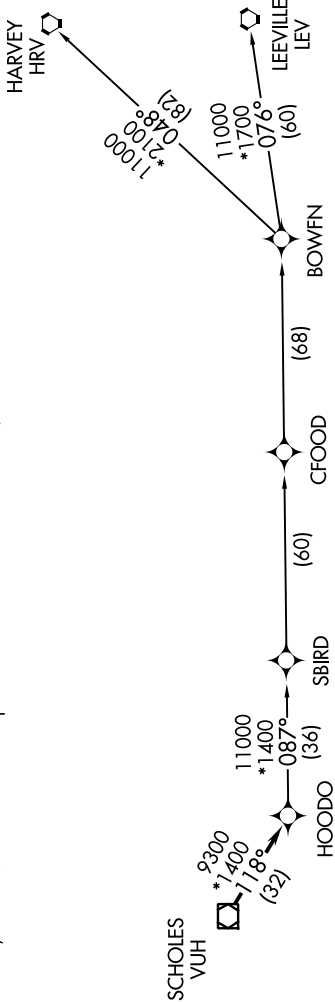
NOTE: DME/DME/IRU or GPS required.

NOTE: For non-GPS equipped aircraft, LCH, ILLA, TBD, and LEV DME's must be operational.

TAKEOFF MINIMUMS

Rwy 14, 32: Standard with minimum climb of 500' per NM to 540.

**TOP ALTITUDE:
 ASSIGNED BY ATC**



NOTE: Chart not to scale.

DEPARTURE ROUTE DESCRIPTION

TAKEOFF RWY 14: Climb heading 140° to 540, for RADAR vectors to VUH VOR/DME, thence

TAKEOFF RWY 32: Climb heading 320° to 540, for RADAR vectors to VUH VOR/DME, thence

. . . . on track 118° to HOODO, then on (transition). Maintain ATC assigned altitude.
 Expect filed altitude 10 minutes after departure.

BOWFN TRANSITION (HOODO6.BOWFN)

CFOOD TRANSITION (HOODO6.CFOOD)

HARVEY TRANSITION (HOODO6.HRV)

LEEVILLE TRANSITION (HOODO6.LEV)

SBIRD TRANSITION (HOODO6.SBIRD)

SC-5, 10 SEP 2020 to 08 OCT 2020