

WAAS CH 82215 W28A	APP CRS 277°	Rwy ldg 4971 TDZE 1134 Apt Elev 1136
--	------------------------	---

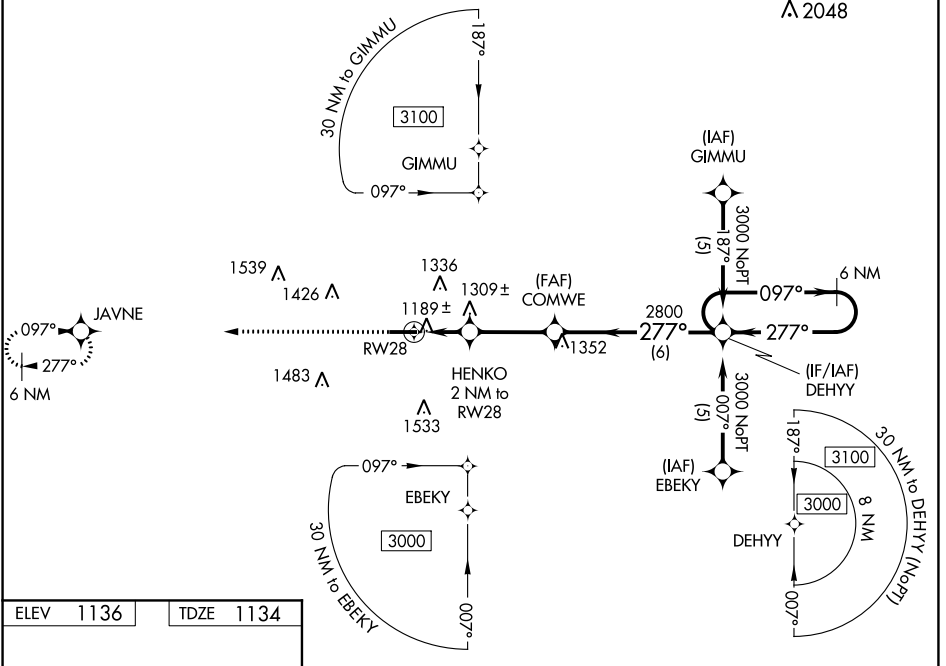
RNAV (GPS) RWY 28

WAYNE COUNTY (BJJ)

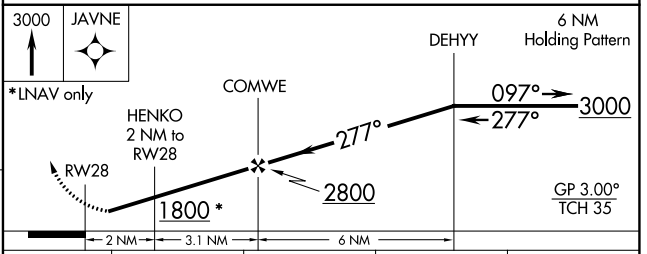
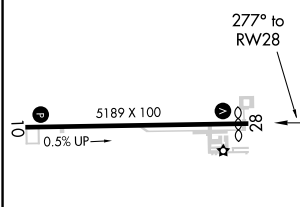
Baro-VNAV NA when using Akron-Canton Rgnl altimeter setting. For uncompensated Baro-VNAV systems, LNAV/VNAV NA below -17°C (2°F) or above 54°C (130°F). Helicopter visibility reduction below 3/4 SM NA. When local altimeter setting not received, use Akron-Canton Rgnl altimeter setting and increase all DA/MDA 60 feet; increase LPV all Cats visibility 1/4 mile. Increase LNAV/VNAV all Cats visibility and LNAV Cat C/D visibility 1/8 mile.

MISSED APPROACH: Climb to 3000 direct JAVNE and hold.

ASOS 118.075	CLEVELAND APP CON * 118.6 371.875	CLNC DEL 121.75	UNICOM 122.8 (CTAF) 0
------------------------	---	---------------------------	---------------------------------



ELEV 1136	TDZE 1134
-----------	-----------



CATEGORY	A	B	C	D
LPV DA	1398-1 264 (300-1)			
LNAV/ VNAV DA	1589-1 1/8 455 (500-1 1/8)			
LNAV MDA	1560-1	426 (500-1)	1560-1 1/4	426 (500-1 1/4)
CIRCLING	1600-1	464 (500-1)	1600-1 1/2	1700-2 564 (600-2)

REIL Rwy 10 and 28
HIRL Rwy 10-28

EC-2, 10 SEP 2020 to 08 OCT 2020

EC-2, 10 SEP 2020 to 08 OCT 2020