

WAAS CH 93599 W20A	APP CRS 201°	Rwy Idg TDZE Apt Elev	6501 889 889
--	------------------------	-----------------------------	---

RNAV (GPS) RWY 20

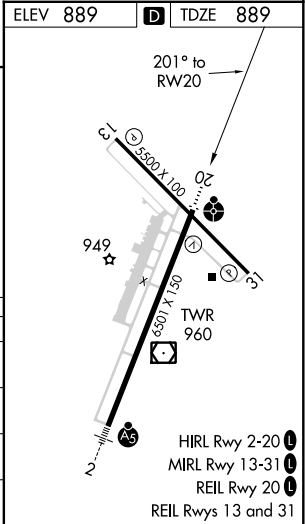
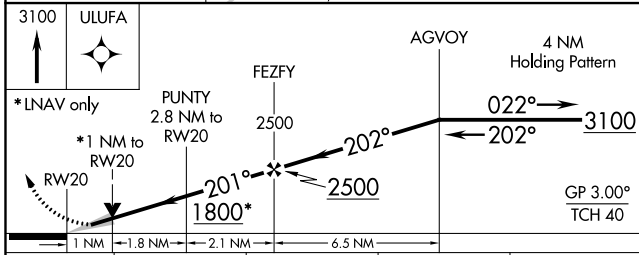
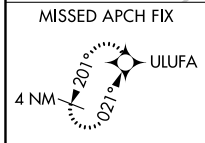
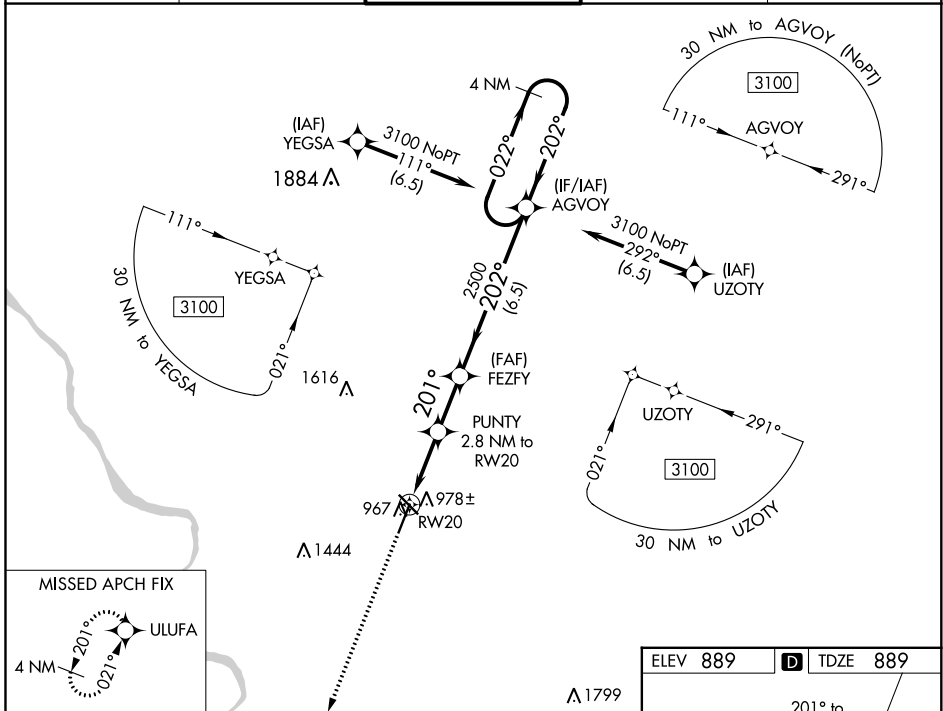
COLUMBIA RGNL (COU)

▼ For uncompensated Baro-VNAV systems, LNAV/VNAV NA below -17°C (2°F) or above 54°C (130°F). Circling NA for Cat D west of Rwy 2 and 13.
DME/DME RNP-0.3 NA. For inop ALS, increase LNAV Cat A/B visibility to 7/5 SM.



MISSED APPROACH: Climb to 3100 direct ULUFA and hold.

ATIS 128.45	MIZZU APP CON 124.375 353.7	COLUMBIA TOWER * 119.3 (CTAF) 363.25	GND CON 121.9	UNICOM 122.95
-----------------------	---------------------------------------	---	-------------------------	-------------------------



CATEGORY	A	B	C	D
LPV DA		1139-3/4	250 (300-3/4)	
LNAV/VNAV DA		1139-3/4	250 (300-3/4)	
LNAV MDA	1240-3/4	351 (400-3/4)	1240-7/8	351 (400-7/8)
CIRCLING	1300-1 411 (500-1)	1340-1 451 (500-1)	1340-1 1/2 451 (500-1 1/2)	1440-2 551 (600-2)

- HIRL Rwy 2-20 **1**
- MIRL Rwy 13-31 **1**
- REIL Rwy 20 **1**
- REIL Rwy 13 and 31 **1**

NC-3, 10 SEP 2020 to 08 OCT 2020

NC-3, 10 SEP 2020 to 08 OCT 2020