

WAAS CH <b>77599</b> <b>W02A</b>	APP CRS <b>021°</b>	Rwy Idg TDZE <b>889</b> Apt Elev <b>889</b>	<b>6501</b>
--	------------------------	---	-------------

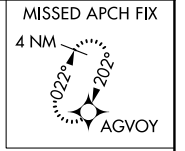
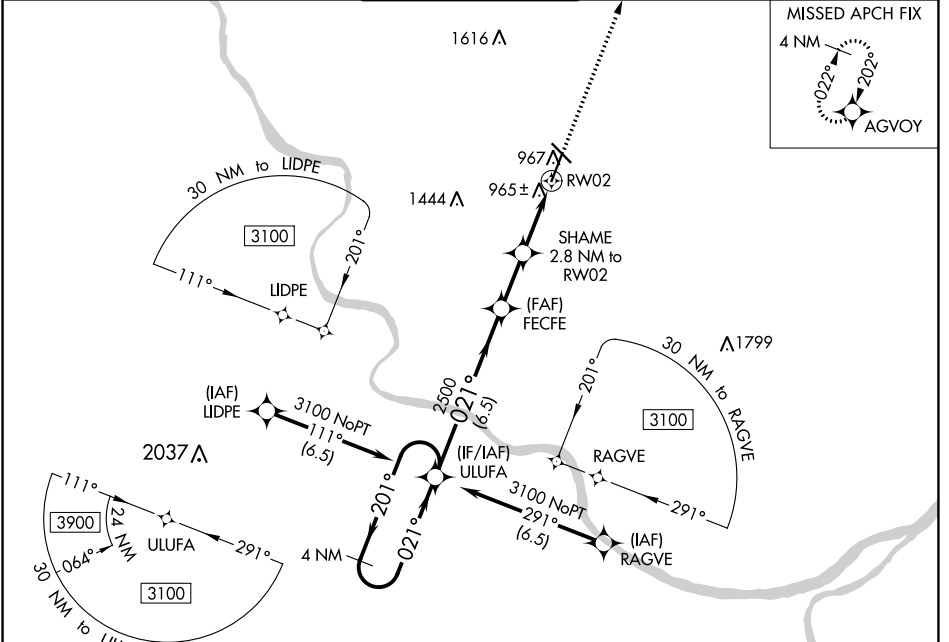
# RNAV (GPS) RWY 2

COLUMBIA RGNL (COU)

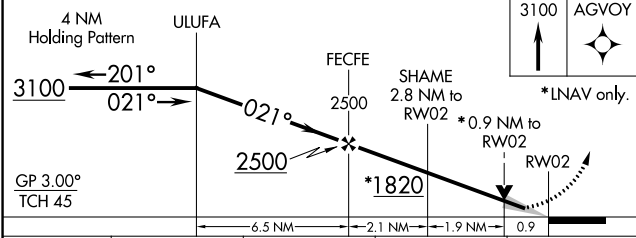
**▽** For uncompensated Baro-VNAV systems, LNAV/VNAV NA below -17°C (2°F) or above 54°C (130°F). Circling NA for Cat D west of Rwy 2 and 13.  
DME/DME RNP-0.3 NA. For inop ALS, increase LNAV/VNAV all Cats visibility to RVR 4500.  
# RVR 1800 authorized with the use of FD or AP or HUD to DA.

MALSR  MISSED APPROACH: Climb to 3100 direct AGVOY and hold.

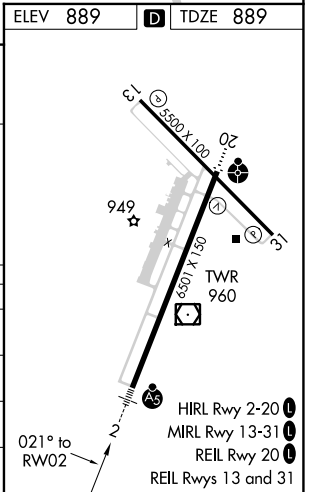
ATIS <b>128.45</b>	MIZZO APP CON <b>124.375 353.7</b>	COLUMBIA TOWER * <b>119.3 (CTAF) 363.25</b>	GND CON <b>121.9</b>	UNICOM <b>122.95</b>
-----------------------	---------------------------------------	--	-------------------------	-------------------------



ELEV 889	<b>D</b> TDZE 889
----------	-------------------



CATEGORY	A	B	C	D
LPV DA#		1089/24	200 (200-½)	
LNAV/VNAV DA		1143/24	254 (300-½)	
LNAV MDA		1220/24	331 (400-½)	
<b>C</b> CIRCLING	1300-1 411 (500-1)	1340-1 451 (500-1)	1340-1½ 451 (500-½)	1440-2 551 (600-2)



NC-3, 10 SEP 2020 to 08 OCT 2020

NC-3, 10 SEP 2020 to 08 OCT 2020