

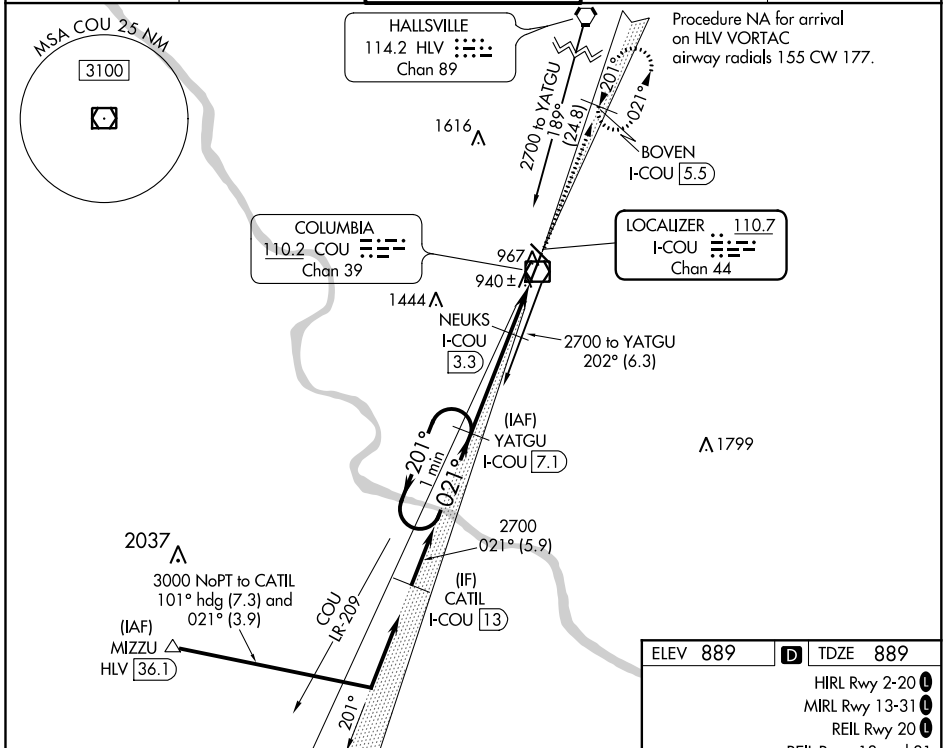
LOC/DME I-COU 110.7 Chan 44	APP CRS 021°	Rwy Idg TDZE Apt Elev	6501 889 889
--	------------------------	-----------------------------	---

ILS or LOC RWY 2

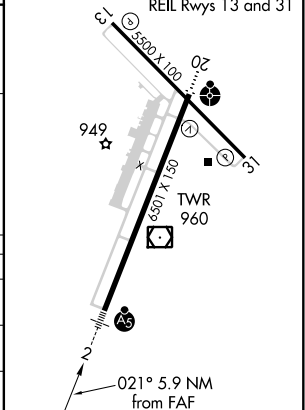
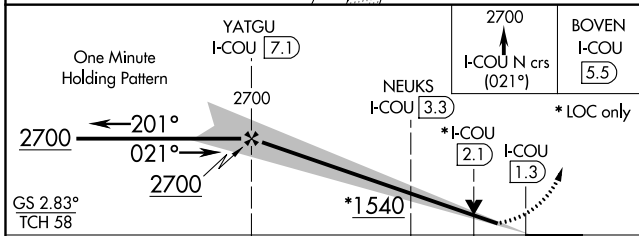
COLUMBIA RGNL (COU)

⚠ Circling NA for Cat D west of Rwy 2 and 13. DME required. # RVR 1800 authorized with use of FD or AP or HUD to DA.	MALS 	MISSED APPROACH: Climb to 2700 on I-COU localizer north course (021°) to BOVEN/I-COU 5.5 DME and hold.
---	-----------------	---

ATIS 128.45	MIZZO APP CON 124.375 353.7	COLUMBIA TOWER * 119.3 (CTAF) 363.25	GND CON 121.9	UNICOM 122.95
-----------------------	---------------------------------------	---	-------------------------	-------------------------



ELEV 889	D TDZE 889
HIRL Rwy 2-20	1
MIRL Rwy 13-31	1
REIL Rwy 20	1
REIL Rwy 13 and 31	1



CATEGORY	A	B	C	D
S-ILS 2#		1089/24	200 (200-½)	
S-LOC 2		1200/24	311 (400-½)	
C CIRCLING	1300-1 411 (500-1)	1340-1 451 (500-1)	1340-1½ 451 (500-1½)	1440-2 551 (600-2)

NC-3, 10 SEP 2020 to 08 OCT 2020

NC-3, 10 SEP 2020 to 08 OCT 2020