

WAAS CH <b>42636</b> <b>W30A</b>	APP CRS <b>306°</b>	Rwy Idg TDZE Apt Elev	<b>4000</b> <b>543</b> <b>547</b>
--	------------------------	-----------------------------	---

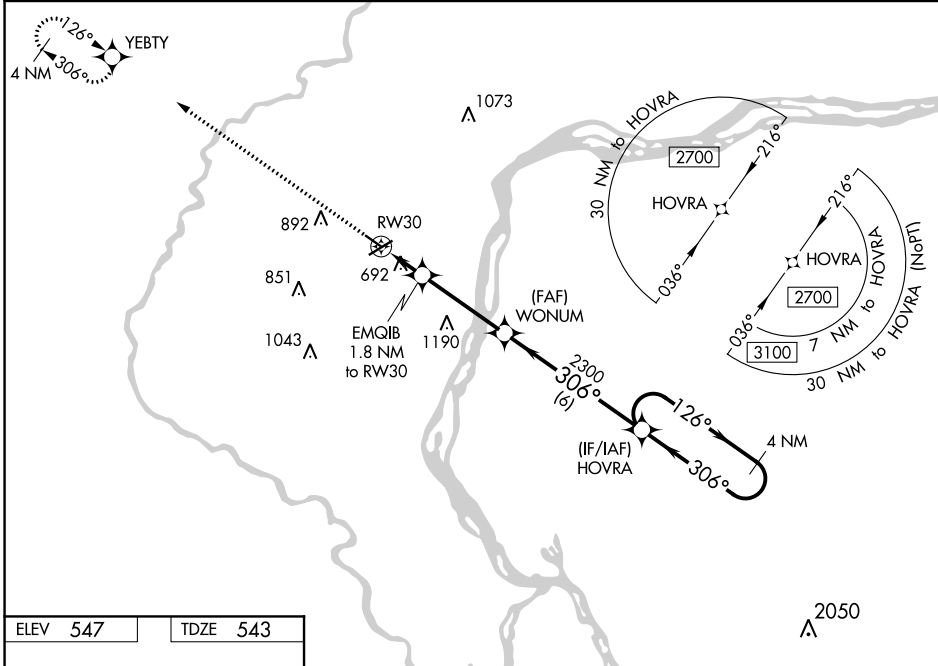
# RNAV (GPS) RWY 30

MUSCATINE MUNI (MUT)

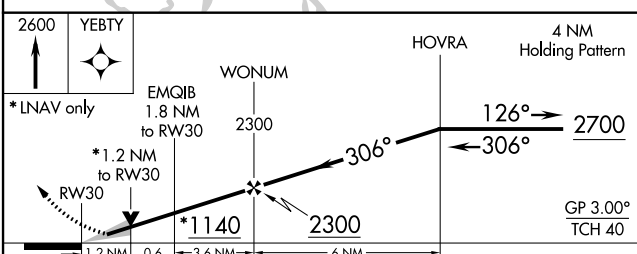
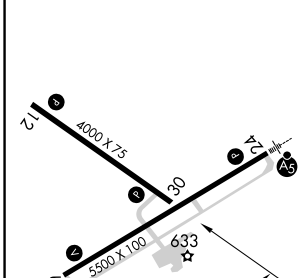
**⚠** DME/DME RNP-0.3 NA. Helicopter visibility reduction below 1 SM NA. VDP and Baro-VNAV NA with Iowa City altimeter setting. When local altimeter setting not received, use Iowa City altimeter setting and increase all DA 76 feet and all MDA 80 feet, increase LNAV/VNAV all Cats visibility 1/4 mile. For uncompensated Baro-VNAV systems, LNAV/VNAV NA below -16°C (4°F) or above 54°C (130°F).

MISSED APPROACH: Climb to 2600 direct YEBTY and hold.

AWOS-3 <b>119.775</b>	QUAD CITY APP CON * <b>133.275 257.8</b>	CLNC DEL <b>119.125</b>	UNICOM <b>122.7 (CTAF) 0</b>
--------------------------	---	----------------------------	---------------------------------



ELEV <b>547</b>	TDZE <b>543</b>
-----------------	-----------------



CATEGORY	A	B	C	D
LPV DA	743-1	200 (200-1)		NA
LNAV/VNAV DA	989-1½	446 (500-1½)		NA
LNAV MDA	960-1	417 (500-1)		NA
<b>C</b> CIRCLING	1000-1 453 (500-1)	1200-1 653 (700-1)		NA

REIL Rwy 6, 12, and 30 **0**  
MIRL Rwy 6-24 and 12-30 **0**

NC-3, 10 SEP 2020 to 08 OCT 2020

NC-3, 10 SEP 2020 to 08 OCT 2020