

AWOS-3PT
120.725
INDIANAPOLIS DEP CON
124.65 127.15 317.8

**TOP ALTITUDE:
ASSIGNED BY ATC**

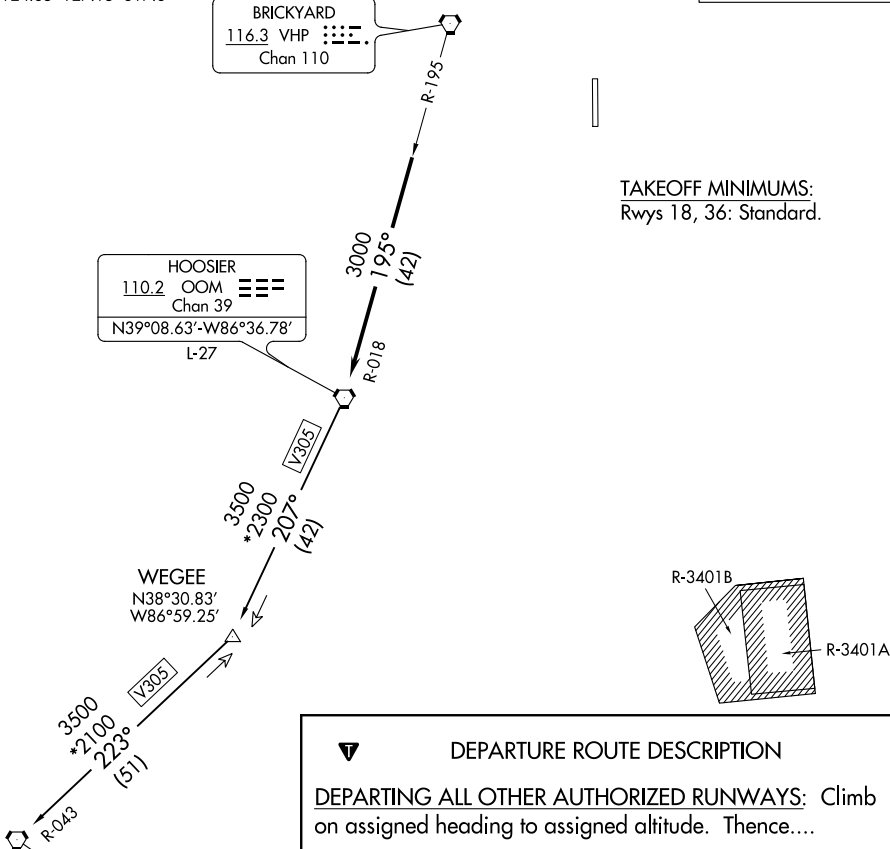
BRICKYARD
116.3 VHP
Chan 110

TAKEOFF MINIMUMS:
Rwys 18, 36: Standard.

HOOSIER
110.2 OOM
Chan 39
N39°08.63'-W86°36.78'
L-27

WEGEE
N38°30.83'
W86°59.25'

POCKET CITY
113.3 PXV
Chan 80
N37°55.70'-W87°45.74'
L-16, H-5



DEPARTURE ROUTE DESCRIPTION

DEPARTING ALL OTHER AUTHORIZED RUNWAYS: Climb on assigned heading to assigned altitude. Thence....

....expect RADAR vectors to join VHP R-195 to OOM VORTAC then via transition or assigned route. Expect clearance to requested altitude ten minutes after departure.

POCKET CITY TRANSITION (OOM5.PXV): From over OOM VORTAC via OOM R-207 to WEGEE, then via PXV R-043 to PXV VORTAC.

- NOTE: RADAR required.
- NOTE: Select appropriate localizer/DME frequency/channel prior to departure.
- NOTE: Turbojets accelerate to 250K until reaching 10000, if unable advise ATC.
- NOTE: Assigned to aircraft with a requested altitude of 11000 or above.

NOTE: Chart not to scale.

EC-2, 10 SEP 2020 to 08 OCT 2020

EC-2, 10 SEP 2020 to 08 OCT 2020