

|  |                        |                             |   |
|--|------------------------|-----------------------------|---|
| WAAS<br>CH <b>86833</b><br><b>W17A</b> | APP CRS<br><b>173°</b> | Rwy Idg<br>TDZE<br>Apt Elev | <b>5701</b><br><b>2918</b><br><b>2918</b> |
|--|------------------------|-----------------------------|---|

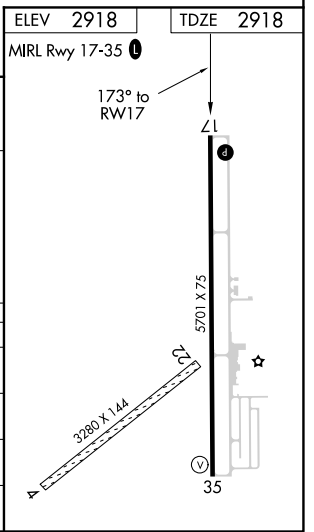
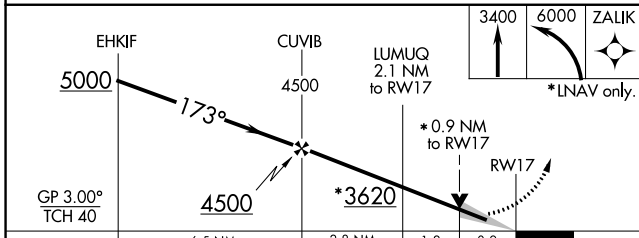
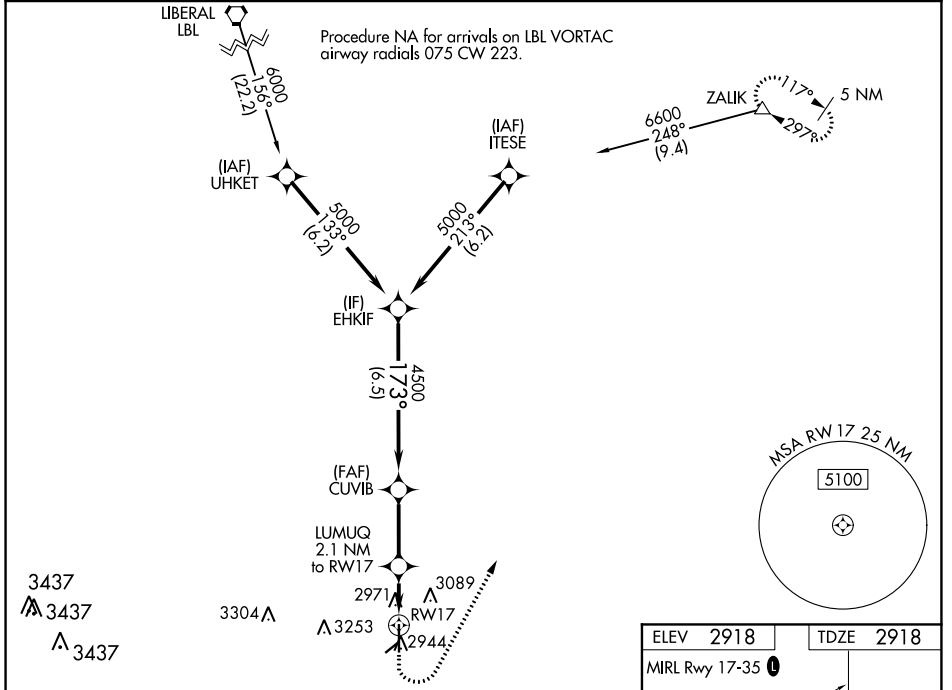
# RNAV (GPS) RWY 17

PERRYTON OCHILTREE COUNTY (PYX)

**⚠** Baro-VNAV and VDP NA when using Gage altimeter setting. For uncompensated Baro-VNAV systems, LNAV-VNAV NA below -20°C (-4°F) or above 54°C (130°F). When local altimeter setting not received, use Gage altimeter setting and increase all DAs 208 feet and MDAs 220 feet; increase LPV and LNAV/VNAV Cats A and B visibility ¾ mile and Circling Cat B visibility ¼ mile. DME/DME RNP-0.3 NA. Circling NA to Rwy's 4 and 22.

**MISSED APPROACH:** Climb to 3400 then climbing left turn to 6000 direct ZALIK and hold.

|                          |   |                                 |
|--------------------------|---|---------------------------------|
| AWOS-3<br><b>118.175</b> | KANSAS CITY CENTER<br><b>126.95 379.2</b> | UNICOM<br><b>122.8 (CTAF) 0</b> |
|--------------------------|---|---------------------------------|



| CATEGORY     | A                     | B                     | C | D  |
|--------------|-----------------------|-----------------------|---|----|
| LPV DA       | 3168-7/8              | 250 (300-7/8)         |   | NA |
| LNAV/VNAV DA | 3168-7/8              | 250 (300-7/8)         |   | NA |
| LNAV MDA     | 3240-1                | 322 (400-1)           |   | NA |
| CIRCLING     | 3300-1<br>382 (400-1) | 3580-1<br>662 (700-1) |   | NA |

SC-2, 10 SEP 2020 to 08 OCT 2020

SC-2, 10 SEP 2020 to 08 OCT 2020