

WAAS CH 65920 W13A	APP CRS 128°	Rwy Idg 5639 TDZE 1182 Apt Elev 1183
--	------------------------	---

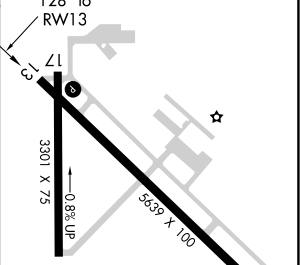
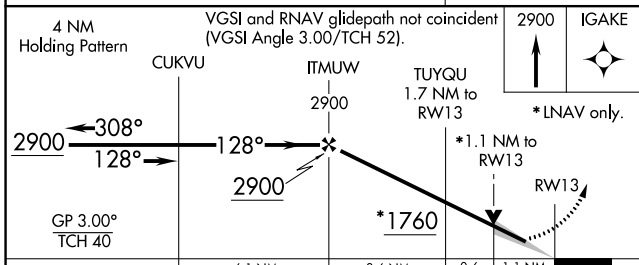
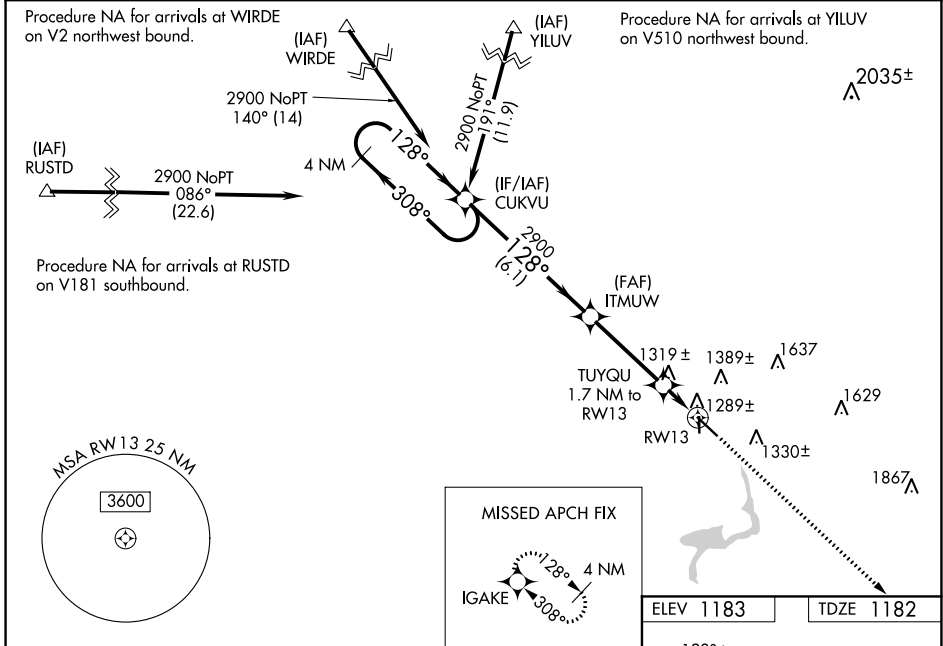
RNAV (GPS) RWY 13

FERGUS FALLS MUNI-EINAR MICKELSON FIELD (F'FM)

For uncompensated Baro-VNAV systems, LNAV/VNAV NA below -17°C (2°F) or above 36°C (96°F). DME/DME RNP-0.3 NA. When local altimeter setting not received, use Wahpeton altimeter setting, and increase all DA 74 feet, increase all MDA 80 feet. Increase LPV 1/8 all Cats, and LNAV/VNAV visibility 1/4 mile all Cats; increase LNAV Cat C and D and Circling Cat C and D visibility 1/4 mile. Baro-VNAV and VDP NA when using Wahpeton altimeter setting.

MISSED APPROACH:
Climb to 2900 direct IGAKE and hold.

AWOS-3 110.4	MINNEAPOLIS CENTER 126.1 269.2	UNICOM 122.8 (CTAF) 0
------------------------	--	---------------------------------



CATEGORY	A	B	C	D
LPV DA		1382-3/4	200 (200-3/4)	
LNAV/VNAV DA		1470-7/8	288 (300-7/8)	
LNAV MDA	1580-1	398 (400-1)	1580-1/8	398 (400-1/8)
CIRCLING	1640-1 457 (500-1)	1740-1 557 (600-1)	1740-1/2 557 (600-1/2)	1880-2/4 697 (700-2/4)

REIL Rwy 13 and 35 0

MIRL Rwy 13-31 and 17-35 0

NC-1, 10 SEP 2020 to 08 OCT 2020

NC-1, 10 SEP 2020 to 08 OCT 2020