

WAAS CH <b>99415</b> <b>W09B</b>	APP CRS <b>093°</b>	Rwy Idg TDZE Apt Elev	<b>5003</b> <b>8</b> <b>8</b>
--	------------------------	-----------------------------	-------------------------------------

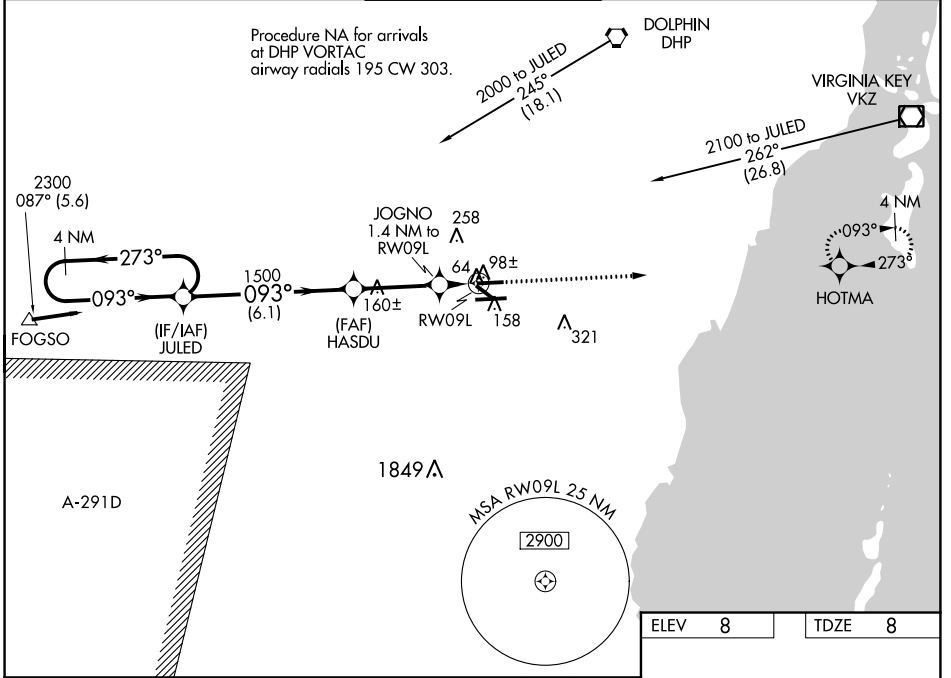
# RNAV (GPS) RWY 9L

MIAMI EXECUTIVE (TMB)

**▼** Circling Rwy 13,31 NA at night. Baro-VNAV NA when using Miami Intl altimeter setting.  
**▲** For uncompensated Baro-VNAV systems, procedure NA below -15°C (5°F) or above 48°C (118°F). DME/DME RNP-0.3 NA. When local altimeter setting not received, use Miami Intl altimeter setting and increase all DA 27 feet and all MDA 40 feet; increase LPV all Cats visibility ¼ mile, LNAV Cat C visibility ¼ mile, and Circling Cat D visibility ¼ mile.

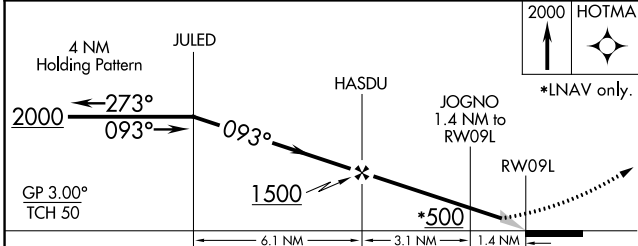
MISSED APPROACH: Climb to 2000 direct HOTMA and hold.

ATIS <b>124.0</b>	MIAMI APP CON <b>125.5 354.1</b>	TAMIAMI TOWER ★ <b>118.9 (CTAF) 0</b>	GND CON <b>121.7</b>	CLNC DEL <b>133.0</b>
----------------------	-------------------------------------	--	-------------------------	--------------------------



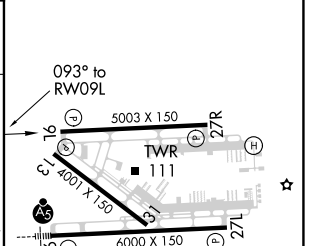
SE-3, 10 SEP 2020 to 08 OCT 2020

SE-3, 10 SEP 2020 to 08 OCT 2020



ELEV	8	TDZE	8
------	---	------	---

CATEGORY	A	B	C	D
LPV DA		258-¾	250 (300-¾)	
LNAV/VNAV DA		364-1¼	356 (400-1¼)	
LNAV MDA	380-1	372 (400-1)		380-1¼ 372 (400-1¼)
CIRCLING	460-1	452 (500-1)	460-1½ 452 (500-1½)	640-2 632 (700-2)



REIL Rwy 13  
 HIRL Rwy 9R-27L  
 MIRL Rws 9L-27R and 13-31