

WAAS CH 93615 W27B	APP CRS 273°	Rwy Idg TDZE Apt Elev	5003 8 8
--	------------------------	-----------------------------	-------------------------------------

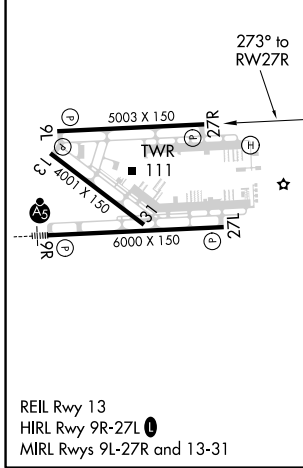
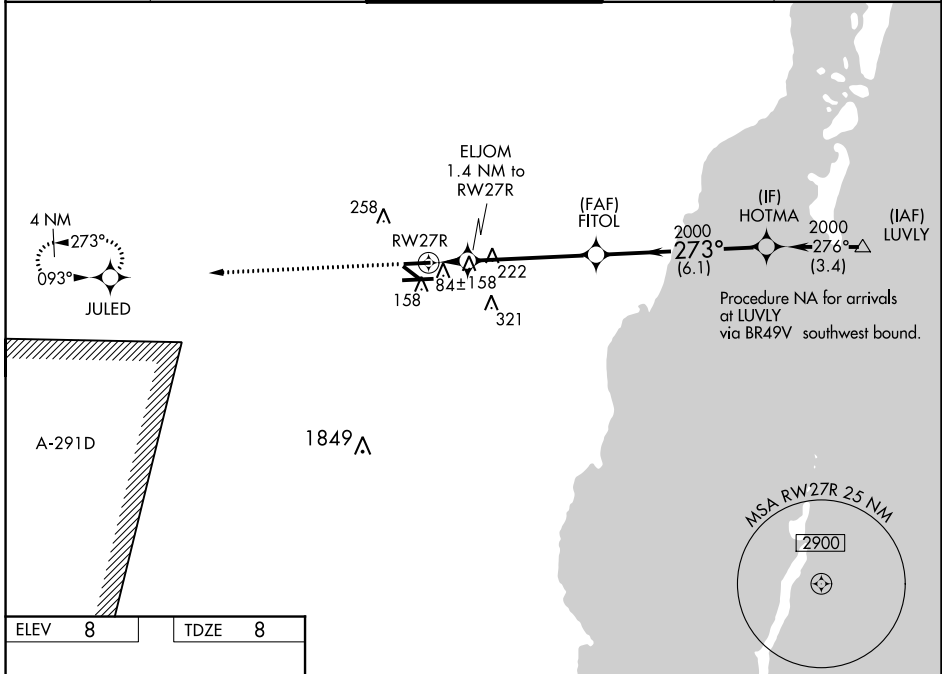
RNAV (GPS) RWY 27R

MIAMI EXECUTIVE (TMB)

▼ For uncompensated Baro-VNAV systems, LNAV/VNAV NA below -1.5°C (5°F) or above 49°C (120°F). DME/DME RNP-0.3 NA. When local altimeter setting not received, use Miami Intl altimeter setting and adjust all DA 27 feet and all MDA 40 feet; increase LPV all Cats visibility ¼ mile, LNAV Cat D visibility ¼ mile, and Circling Cat D visibility ¼ mile. Baro-VNAV NA when using Miami Intl altimeter setting. Circling to Rwy 13, 31 NA at night.

▲ MISSED APPROACH: Climb to 2000 direct JULED and hold.

ATIS 124.0	MIAMI APP CON 125.5 354.1	TAMIAMI TOWER ★ 118.9 (CTAF) 0	GND CON 121.7	CLNC DEL 133.0
----------------------	-------------------------------------	--	-------------------------	--------------------------



ELEV	8	TDZE	8
2000	JULED	FITOL	HOTMA
*LNAV only.		ELJOM 1.4 NM to RWY 27R	Procedure Turn NA
RWY 27R		*500	2000
1.4 NM		4.6 NM	6.1 NM
GP 3.00°	TCH 50		
CATEGORY	A	B	C
LPV DA	258-¾ 250 (300-¾)		
LNAV/VNAV DA	352-1¼ 344 (400-1¼)		
LNAV MDA	420-1	412 (500-1)	420-1¼ 412 (500-1¼)
CIRCLING	460-1	452 (500-1)	460-1½ 640-2 452 (500-1½) 632 (700-2)

SE-3, 10 SEP 2020 to 08 OCT 2020

SE-3, 10 SEP 2020 to 08 OCT 2020