

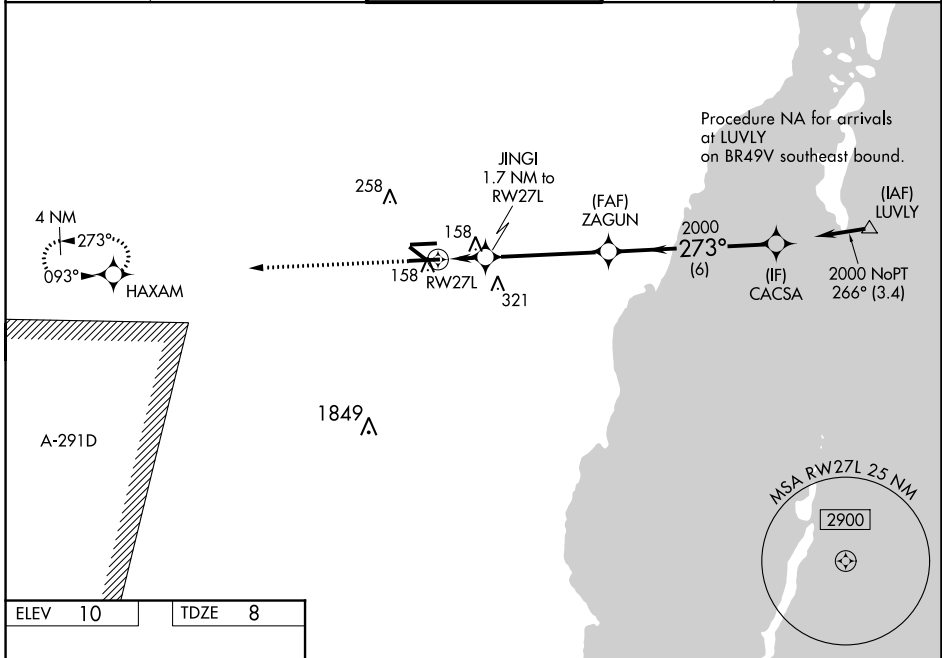
WAAS CH <b>56400</b> <b>W27A</b>	APP CRS <b>273°</b>	Rwy Idg TDZE Apt Elev	<b>6000</b> <b>8</b> <b>10</b>
--	------------------------	-----------------------------	--------------------------------------

# RNAV (GPS) RWY 27L

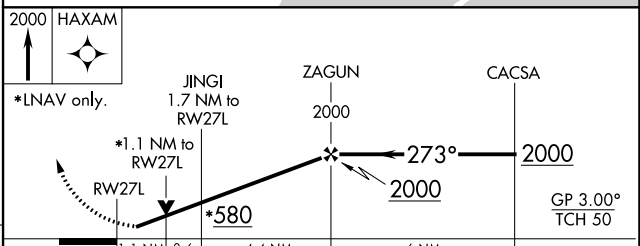
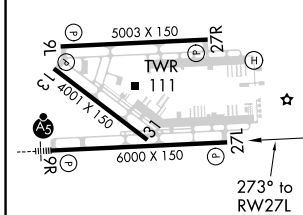
MIAMI EXECUTIVE (TMB)

RNP APCH.		<p>⚠ Circling Rwy 13, 31 NA at night. Rwy 27L helicopter visibility reduction below <math>\frac{3}{4}</math> SM NA. For uncompensated Baro-VNAV systems, LNAV/VNAV NA below <math>-1.5^{\circ}\text{C}</math> or above <math>43^{\circ}\text{C}</math>. VDP and Baro-VNAV NA when using Miami Intl altimeter setting. When local altimeter setting not received, use Miami Intl altimeter setting and increase LPV DA to 235 feet, LNAV/VNAV DA to 368 feet and all MDA 40 feet, increase LNAV Cats C/D visibility <math>\frac{1}{4}</math> SM.</p>		<p>MISSED APPROACH: Climb to 2000 direct HAXAM and hold.</p>	
-----------	--	---	--	--	--

ATIS <b>124.0</b>	MIAMI APP CON <b>125.5 354.1</b>	TAMIAMI TOWER ★ <b>118.9</b> (CTAF) <b>0</b>	GND CON <b>121.7</b>	CLNC DEL <b>133.0</b>
----------------------	-------------------------------------	---	-------------------------	--------------------------



ELEV 10	TDZE 8
---------	--------



CATEGORY	A	B	C	D
LPV DA		208- $\frac{3}{4}$	200 (200- $\frac{3}{4}$ )	
LNAV/VNAV DA		341-1 $\frac{1}{8}$	333 (400-1 $\frac{1}{8}$ )	
LNAV MDA	420-1	412 (500-1)	420-1 $\frac{1}{8}$	412 (500-1 $\frac{1}{8}$ )
CIRCLING	460-1	450 (500-1)	460-1 $\frac{1}{2}$ 450 (500-1 $\frac{1}{2}$ )	640-2 630 (700-2)

REIL Rwy 13  
HIRL Rwy 9R-27L **0**  
MIRL Rwy 9L-27R and 13-31

SE-3, 10 SEP 2020 to 08 OCT 2020

SE-3, 10 SEP 2020 to 08 OCT 2020