

EC-3, 10 SEP 2020 to 08 OCT 2020

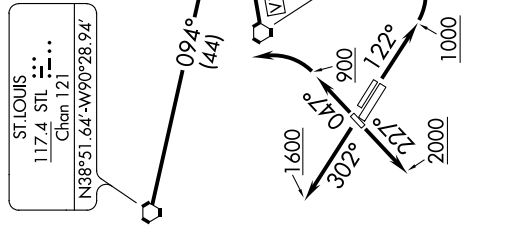
TOP ALTITUDE: ASSIGNED BY ATC

ATIS
121.45
CLNC DEL
118.275
121.8 (when tower closed)
GND CON

DOWNTOWN TOWER *
119.925 379.3
ST LOUIS DEP CON
123.7 371.875

TAKEOFF MINIMUMS

Rwys 12L/R, 23, 30R: Standard.
Rwy 5: 200-1/4 or standard with minimum climb of 343' per NM to 700.
Rwy 30L: 400-2 1/2 or standard with minimum climb of 220' per NM to 900,
or alternatively, with standard takeoff minimums and a normal 200'
per NM climb gradient, takeoff must occur no later than 2100'
prior to DER.



NOTE: RADAR required.
NOTE: BRICKYARD transition, CREEP transition, and ROSEWOOD transition: DME required.



NOTE: Chart not to scale.

(NARRATIVE ON FOLLOWING PAGE)

EC-3, 10 SEP 2020 to 08 OCT 2020