

WAAS CH <b>58022</b> <b>W22A</b>	APP CRS <b>223°</b>	Rwy Idg TDZE Apt Elev	<b>4418</b> <b>172</b> <b>172</b>
--	------------------------	-----------------------------	---

# RNAV (GPS) RWY 22

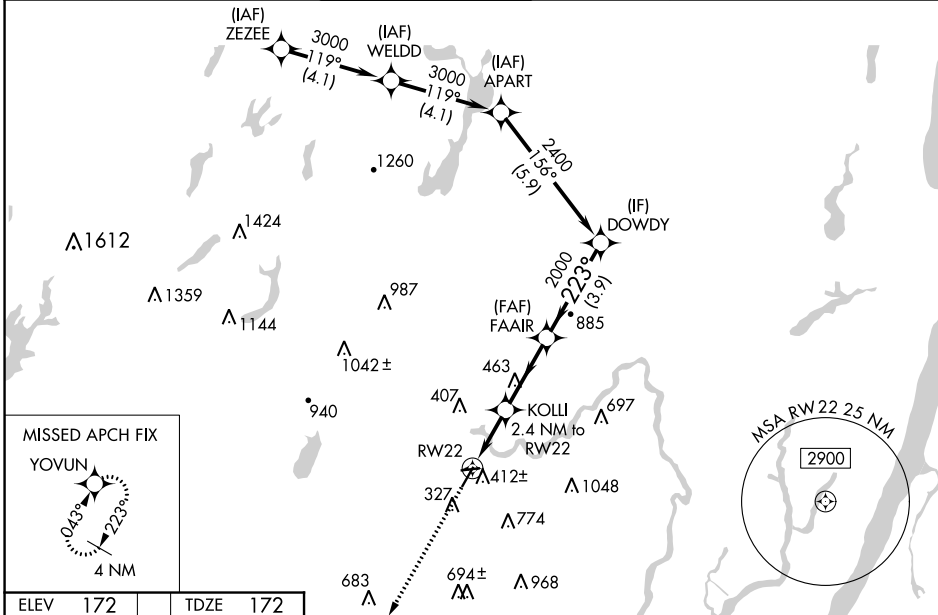
ESSEX COUNTY (CDW)

RNP APCH.

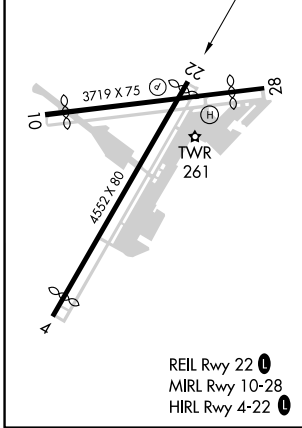
**▼** Rwy 22 helicopter visibility reduction below 1 SM NA. Baro-VNAV NA when using Newark altimeter setting. For uncompensated Baro-VNAV systems, LNAV/VNAV NA below -15°C or above 54°C. When local altimeter setting not received, use Newark altimeter setting and increase all DA 50 feet and all MDA 60 feet; increase LNAV/VNAV all Cats and LNAV Cat C and Circling Cats A and C visibility ¼ SM. Circling Rwy 4, 10, 28 NA at night.

**MISSED APPROACH:**  
Climb to 2000 direct YOVUN and hold.

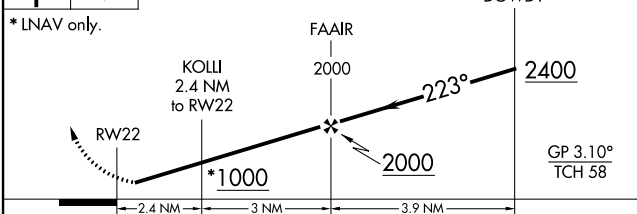
ATIS <b>135.5</b>	NEW YORK APP CON <b>127.6 379.9</b>	CALDWELL TOWER * <b>119.8 (CTAF) 0</b>	GND CON <b>121.9</b>	CLNC DEL <b>121.1</b>	UNICOM <b>122.95</b>
----------------------	--	---	-------------------------	--------------------------	-------------------------



ELEV 172	TDZE 172
----------	----------



2000 YOVUN VGS1 and descent angles not coincident (VGS1 Angle 3.00/TCH 42).



CATEGORY	A	B	C	D
LPV DA	459-1	287 (300-1)		NA
LNAV/VNAV DA	610-1 <sup>3</sup> / <sub>8</sub>	438 (500-1 <sup>3</sup> / <sub>8</sub> )		NA
LNAV MDA	680-1	508 (600-1)	680-1 <sup>3</sup> / <sub>8</sub> 508 (600-1 <sup>3</sup> / <sub>8</sub> )	NA
<b>C</b> CIRCLING	960-1 788 (800-1)	1040-2 868 (900-2)	1100-2 <sup>3</sup> / <sub>4</sub> 928 (1000-2 <sup>3</sup> / <sub>4</sub> )	NA

NE-2, 10 SEP 2020 to 08 OCT 2020

NE-2, 10 SEP 2020 to 08 OCT 2020