

LOC I-DRT <b>111.9</b> Chan <b>56</b>	APP CRS <b>132°</b>	Rwy Idg TDZE Apt Elev	<b>6000</b> <b>1002</b> <b>1002</b>
---	------------------------	-----------------------------	---

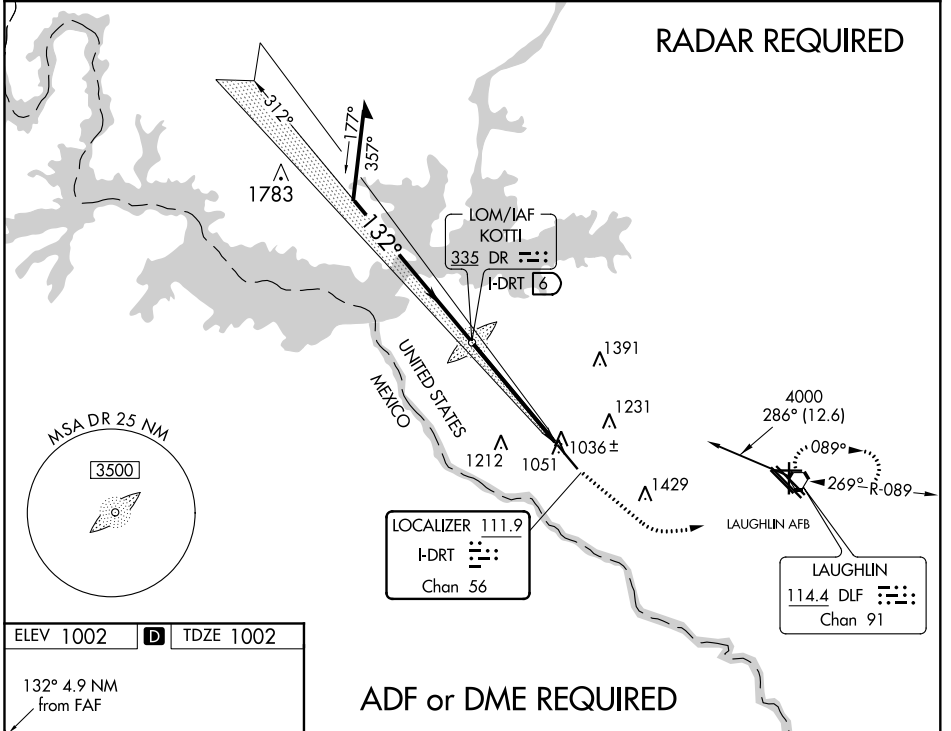
# ILS or LOC RWY 13

DEL RIO INTL (DRT)

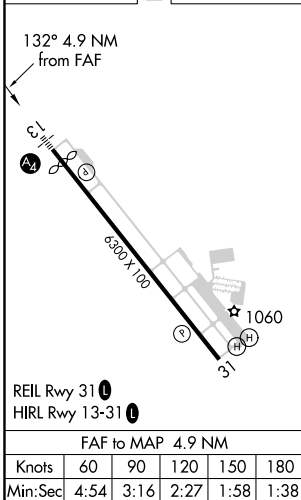
**NA** Circling NA for Cat D SW of Rwy 13-31. When local altimeter setting not received, use Laughlin AFB altimeter setting and increase all DAs 30 feet, all MDAs 40 feet, increase S-LOC 13 Cat D and Circling Cat D visibility ¼ mile. VDP NA when using Laughlin AFB altimeter setting.

**MALS** MISSED APPROACH: Climb to 2000 via heading 122° then climbing left turn to 4000 direct DLF VORTAC and hold. Continue climb-in-hold to 4000.

ASOS <b>118.525</b>	DEL RIO APP CON ★ <b>119.6 259.1</b>	CLNC DEL <b>120.5</b>	UNICOM <b>122.8 (CTAF) 0</b>
------------------------	---	--------------------------	---------------------------------



ELEV 1002	<b>D</b>	TDZE 1002
-----------	----------	-----------



Remain within 10 NM	DR KOTTI LOM I-DRT 6		2000 hdg 122°	4000	DLF
	3200 312° 2673 2700 132°		I-DRT 2.3 I-DRT 1.2		
GS 3.00° TCH 48	3.7 NM		1.2		
CATEGORY	A	B	C	D	
S-ILS 13	1202-¾ 200 (200-¾)				
S-LOC 13	1420-½	418 (500-½)	1420-¾	418 (500-¾)	
CIRCLING	1440-1 438 (500-1)	1460-1 458 (500-1)	1560-1½ 558 (600-1½)	1640-2 638 (700-2)	

DEL RIO, TEXAS  
Orig-A 28FEB19

29°22'N-100°56'W

# DEL RIO INTL (DRT)

## ILS or LOC RWY 13

SC-3, 10 SEP 2020 to 08 OCT 2020

SC-3, 10 SEP 2020 to 08 OCT 2020