

WAAS CH <b>58024</b> <b>W09A</b>	APP CRS <b>089°</b>	Rwy Idg TDZE Apt Elev	<b>4013</b> <b>239</b> <b>246</b>
--	------------------------	-----------------------------	---

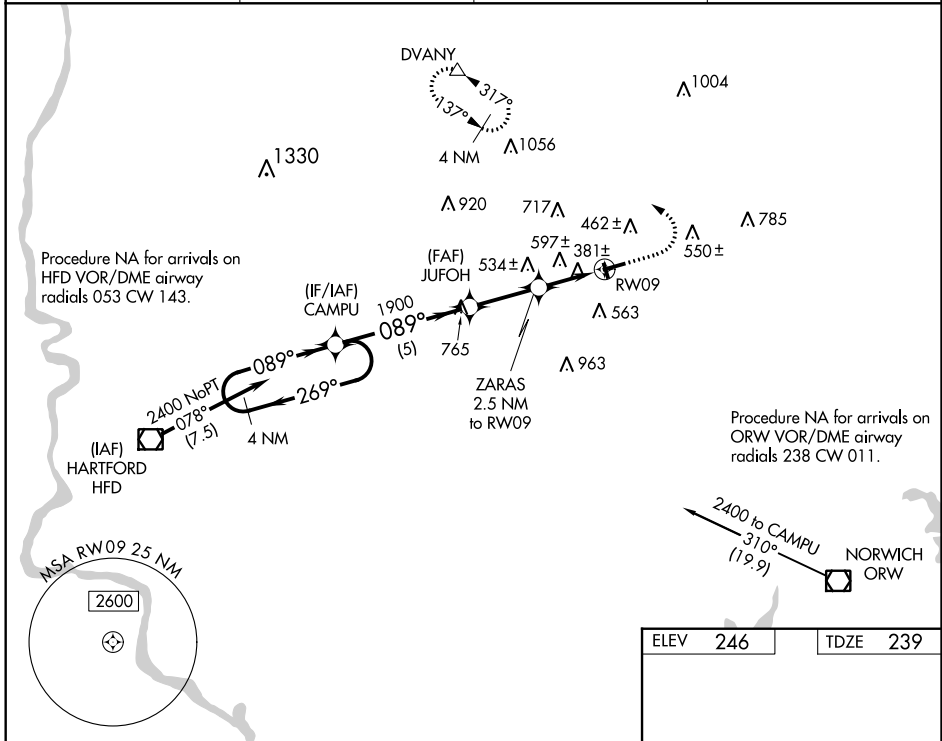
# RNAV (GPS) RWY 9

WINDHAM (IJD)

**▼** Procedure NA at night. DME/DME RNP-0.3 NA. Rwy 9 helicopter visibility reduction below 1 SM NA. When local altimeter setting not received, use Windsor Locks altimeter setting and increase all MDA 80 feet, and LP and LNAV Cat C visibility 1/4 mile, and Circling Cat C visibility 1/2 mile.

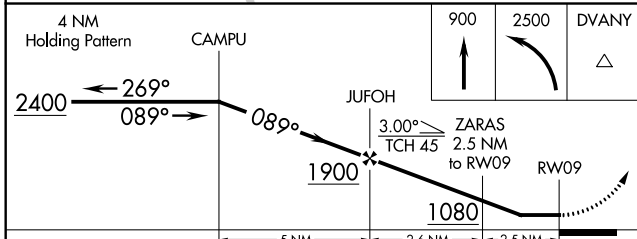
**MISSED APPROACH:**  
Climb to 900 then climbing left turn to 2500 direct DVANY and hold.

ASOS <b>133.675</b>	YANKEE APP CON <b>127.8 269.325</b>	CLNC DEL <b>128.6</b>	UNICOM <b>122.975</b> (CTAF) <b>U</b>
------------------------	--	--------------------------	--



NE-1, 10 SEP 2020 to 08 OCT 2020

NE-1, 10 SEP 2020 to 08 OCT 2020



ELEV	246	TDZE	239
------	-----	------	-----

REIL Rwy 27 **U**  
MIRL Rwy 9-27 **U**

CATEGORY	A	B	C	D
LP MDA	640-1	401 (400-1)	640-1 1/8 401 (400-1 1/8)	NA
LNAV MDA	860-1	621 (700-1)	860-1 3/4 621 (700-1 3/4)	NA
CIRCLING	940-1	694 (700-1)	980-2 734 (800-2)	NA