

RNAV (GPS) RWY 13

| | | |
|----------|-----------|------|
| APCH CRS | Rwy Idg | 6100 |
| 132° | TDZE | 1150 |
| | Arpt Elev | 1150 |

AL-5226 [USA]

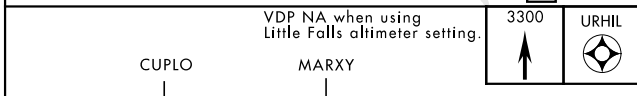
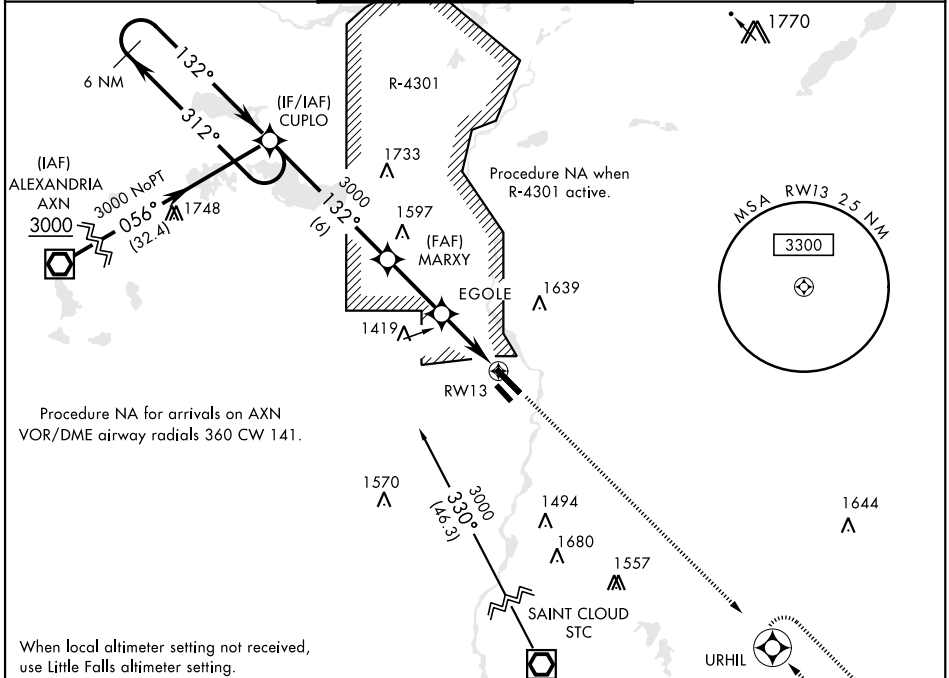
RAY S. MILLER AAF (KRYM)

| | | |
|----|----------|---|
| NA | RNP APCH | MISSED APPROACH: Climb to 3300 direct URHIL and hold. |
|----|----------|---|

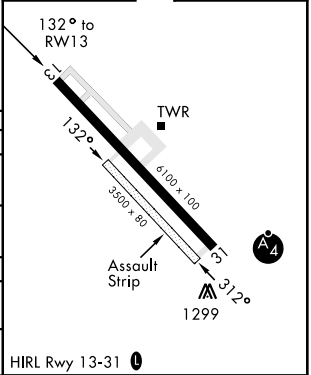
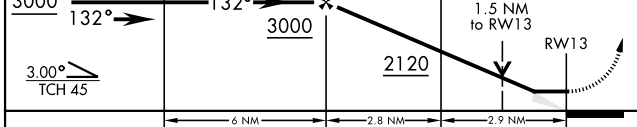
MINNEAPOLIS CENTER
118.05 239.0

MILLER TOWER ★
126.2 0 254.4 46.7

CLNC DEL
126.2



| | |
|-----------|-----------|
| ELEV 1150 | TDZE 1150 |
|-----------|-----------|



| CATEGORY | A | B | C | D |
|--------------------------------|--------------------|----------------------|---------------------|---|
| LNVA MDA | 1680-1 530 (600-1) | 1680-1½ 530 (600-1½) | | |
| CIRCLING | 1680-1 530 (600-1) | 1720-1½ 570 (600-1½) | 2080-3 930 (1000-3) | |
| LITTLE FALLS ALTIMETER SETTING | | | | |
| LNVA MDA | 1720-1 570 (600-1) | 1720-1½ 570 (600-1½) | | |
| CIRCLING | 1720-1 570 (600-1) | 1760-1¾ 610 (700-1¾) | 2120-3 970 (1000-3) | |

RNAV (GPS) RWY 13

NC-1, 10 SEP 2020 to 08 OCT 2020

NC-1, 10 SEP 2020 to 08 OCT 2020