

APP CRS <b>284°</b>	Rwy Idg TDZE Apt Elev	<b>3000</b> <b>150</b> <b>150</b>
------------------------	-----------------------------	---

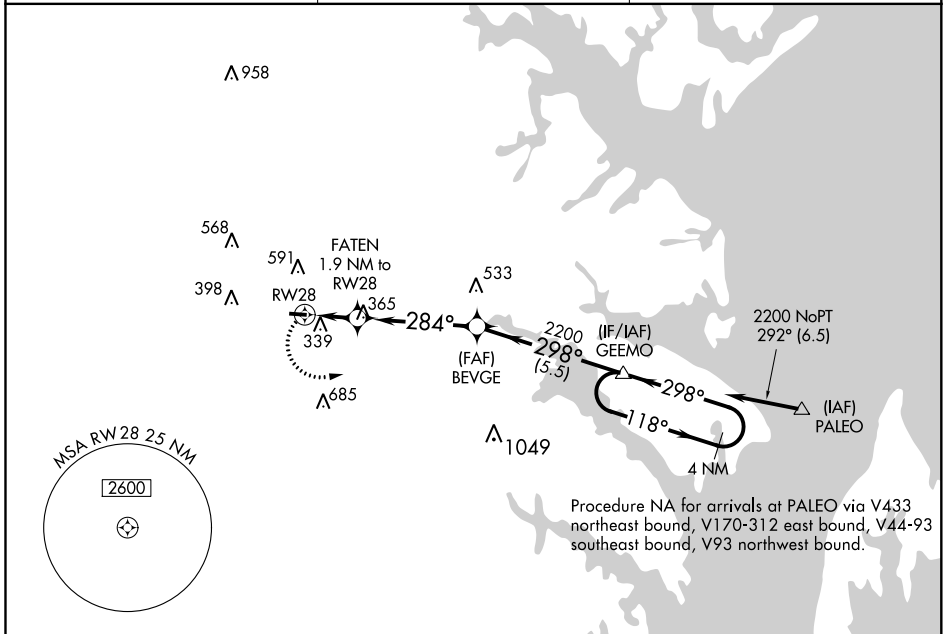
# RNAV (GPS) RWY 28

TIPTON (FME)

**⚠** DME/DME RNP-0.3 NA. Night landing: Rwy 10 NA. Helicopter visibility reduction below ¼ SM NA. When local altimeter setting not received, use Baltimore-Washington Intl Thurgood Marshall altimeter setting and increase all MDA 20 feet.

**⚠** MISSED APPROACH: Climbing left turn to 2200 direct GEEMO and hold.

AWOS-3 <b>123.925</b>	POTOMAC APP CON <b>119.7 290.475</b>	UNICOM <b>123.05 (CTAF) 0</b>
--------------------------	---	----------------------------------



Procedure NA for arrivals at PALEO via V433 northeast bound, V170-312 east bound, V44-93 southeast bound, V93 northwest bound.

NE-3, 10 SEP 2020 to 08 OCT 2020

NE-3, 10 SEP 2020 to 08 OCT 2020

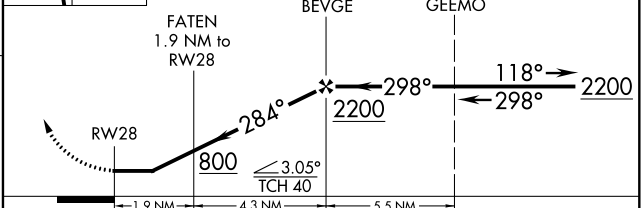
ELEV 150	TDZE 150
----------	----------

266 ☆

REIL Rws 10 and 28 0  
MIRL Rwy 10-28 0

2200 GEEMO VGS1 and descent angles not coincident (VGS1 Angle 4.00/TCH 57).

4 NM Holding Pattern



CATEGORY	A	B	C	D
LNNAV MDA	600-1	450 (500-1)		NA
CIRCLING	820-1	670 (700-1)		NA