

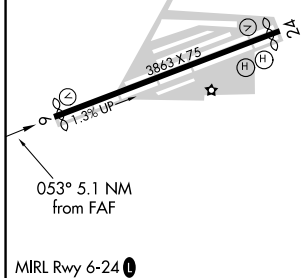
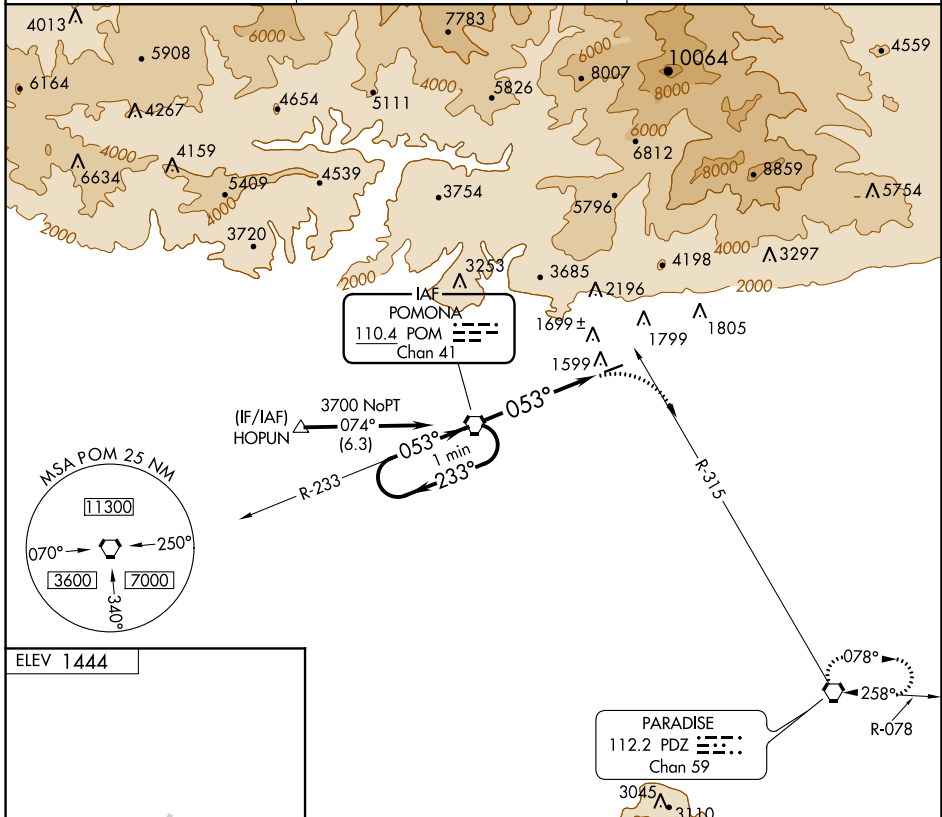
VORTAC POM 110.4 Chan 41	APP CRS 053°	Rwy Idg TDZE Apt Elev N/A N/A 1444
---------------------------------------	------------------------	--

VOR-A
CABLE (CCB)

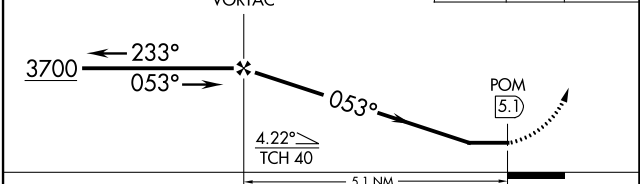
NA Circling NA northwest of Rwy 6-24. Procedure NA at night.
When local altimeter setting not received, use Ontario altimeter setting and increase all MDA 100 feet and all visibilities ½ SM.
Rwy 24 helicopter visibility reduction below 1 SM NA.

MISSED APPROACH: Climbing right turn to 4000 via heading 105° and PDZ R-315 to PDZ VORTAC and hold.

AWOS-3P 119.525	SOCAL APP CON 125.5 349.0	UNICOM 123.0 (CTAF) 0
---------------------------	-------------------------------------	---------------------------------



One Minute Holding Pattern	VGSI and descent angles not coincident (VGSI Angle 4.00/ TCH 34).	4000	PDZ R-315	PDZ
----------------------------	---	------	-----------	-----



FAF to MAP 5.1 NM					
Knots	60	90	120	150	180
Min:Sec	5:06	3:24	2:33	2:02	1:42
C CIRCLING	2240-1 796 (800-1)		2240-2¼ 796 (800-2¼)		NA

SW-3, 10 SEP 2020 to 08 OCT 2020

SW-3, 10 SEP 2020 to 08 OCT 2020