

WAAS CH 69222 W13A	APP CRS 130°	Rwy Idg TDZE Apt Elev	6758 1354 1354
--	------------------------	-----------------------------	---

RNAV (GPS) RWY 13

RANGE RGNL (HIB)

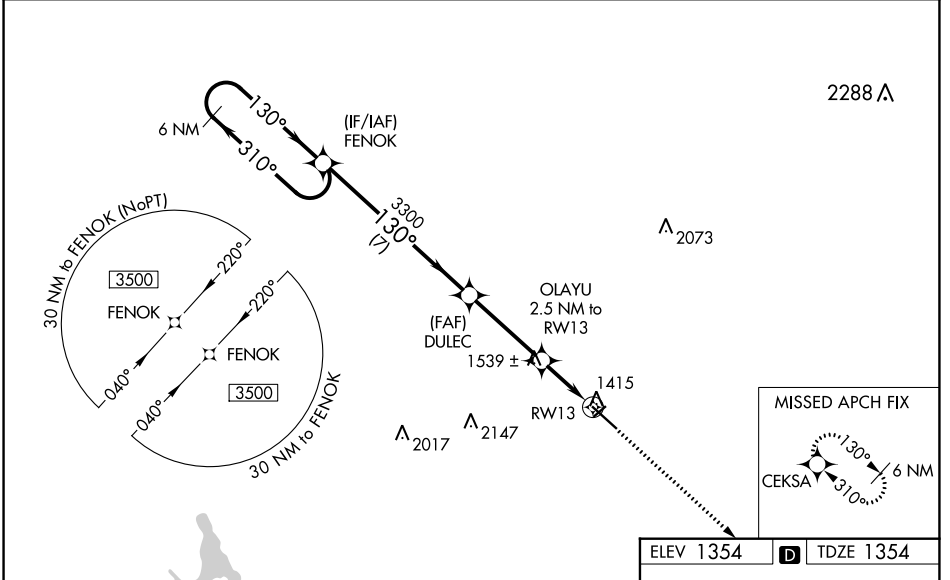
31°C

Circling to Rwy 4 NA at night. DME/DME RNP-0.3 NA. VDP and Baro-VNAV NA when using Eveleth altimeter setting. For uncompensated Baro-VNAV systems, LNAV/VNAV NA below -17°C (2°F) or above 35°C (95°F). Helicopter visibility reduction below 3/4 SM NA. When local altimeter setting not received, use Eveleth altimeter setting and increase all DA 36 feet, and all MDA 40 feet, and increase LNAV Cat C/D visibility to 1 mile. Inop table does not apply to LPV and LNAV/VNAV all Cats. For inop MALSR, increase LNAV Cat A/B visibility to 1 mile. For inop MALSR when using Eveleth altimeter setting, increase LPV and LNAV/VNAV all Cats visibility to 7/8.

MALSR

MISSED APPROACH:
Climb to 3500 direct CEKSA and hold.

ASOS 126.425	DULUTH APP CON 125.45 233.7	CLNC DEL 127.4	UNICOM 123.0 (CTAF) 0
------------------------	---------------------------------------	--------------------------	---------------------------------



6 NM Holding Pattern

FENOK

3500 Δ 310° Δ 130°

3300 Δ 130°

DULEC 3300

OLAYU 2.5 NM to RW13

*LNAV only

*1.3 NM to RW13

*2180

RW13

GP 3.00° TCH 48

7 NM 3.5 NM 1.2 NM 1.3 NM

CATEGORY	A	B	C	D
LPV DA		1604-3/4	250 (300-3/4)	
LNAV/VNAV DA		1614-3/4	260 (300-3/4)	
LNAV MDA	1800-3/4	446 (500-3/4)	1800-7/8	446 (500-7/8)
CIRCLING	1820-1 466 (500-1)	1840-1 486 (500-1)	1840-1 1/2 486 (500-1 1/2)	1920-2 566 (600-2)

HIRL Rwy 13-31 **0**

130° to RW13

3500 CEKSA

1411

1391 Δ

1368 Δ

1395 Δ

1388 Δ

1390 Δ

6758 x 130

NC-1, 10 SEP 2020 to 08 OCT 2020

NC-1, 10 SEP 2020 to 08 OCT 2020