

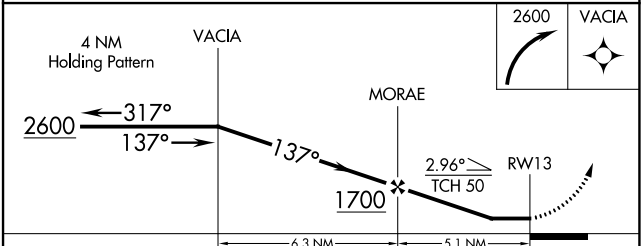
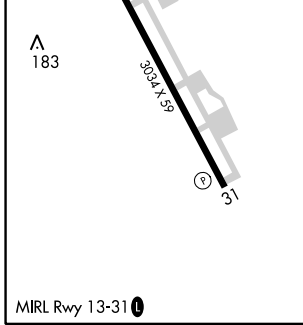
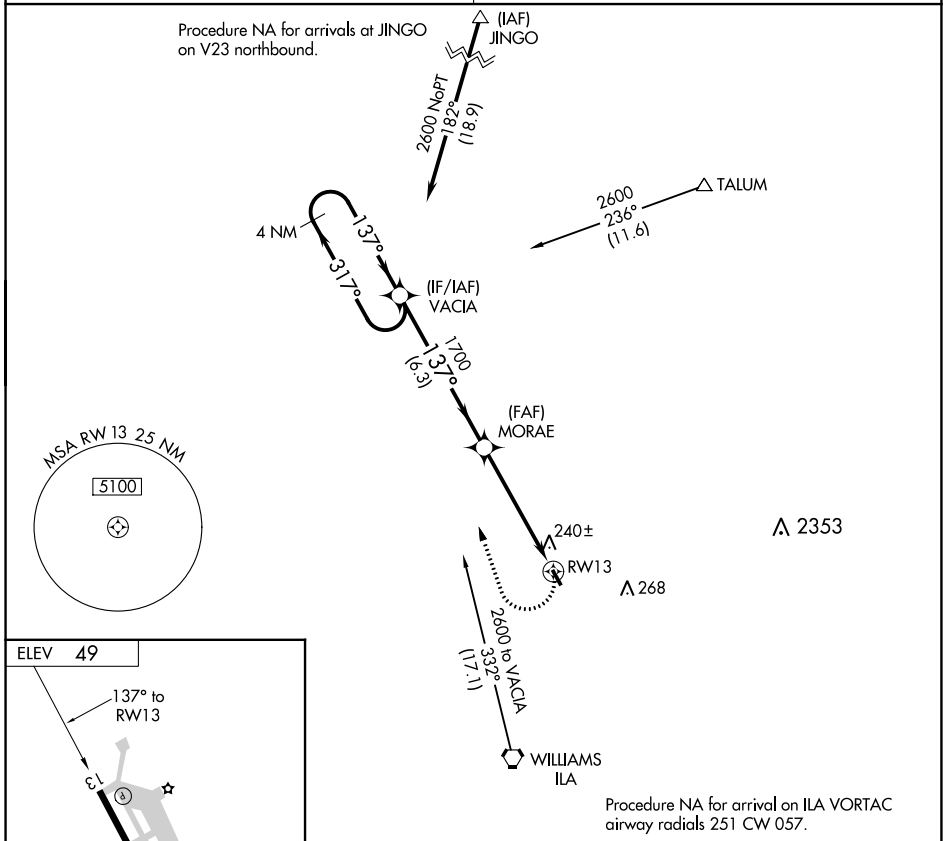
APP CRS	Rwy Idg	N/A
137°	TDZE	N/A
	Apt Elev	49

RNAV (GPS)-B

COLUSA COUNTY (008)

RNP APCH.	Obtain local altimeter setting on CTAF; when not received, use Sacramento Int'l altimeter setting and increase all MDAs 100 feet and Cat C visibility 1/2 SM. Circling Rwy 31 NA at night.	MISSED APPROACH: Climbing right turn to 2600 direct VACIA and hold.
-----------	--	---

OAKLAND CENTER 132.2 350.3	UNICOM 122.8 (CTAF) 0
--------------------------------------	---------------------------------



CATEGORY	A	B	C	D
C CIRCLING	600-1	551 (600-1)	620-1½ 571 (600-1½)	NA

SW-2, 10 SEP 2020 to 08 OCT 2020

SW-2, 10 SEP 2020 to 08 OCT 2020