

LOC I-ECC 110.1	APP CRS 200°	Rwy Idg TDZE Apt Elev	8650 5600 5622
---------------------------	------------------------	-----------------------------	---

ILS or LOC RWY 20

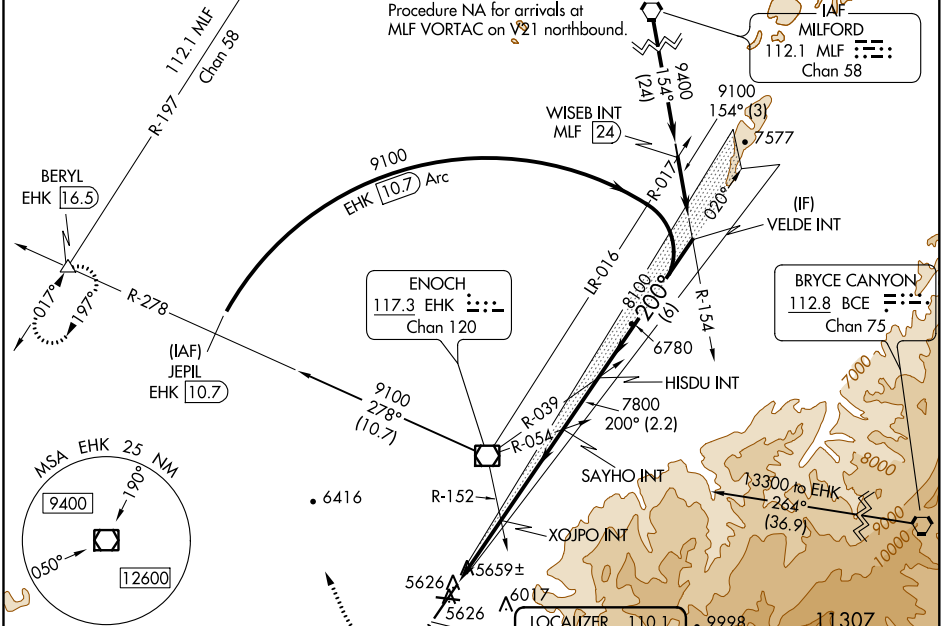
CEDAR CITY RGNL (CDC)

NA Circling NA southeast of Rwy 2-20.
For inop ALS, increase S-LOC 20 Cats C/D visibility to 1 SM.
For inop ALS, increase S-ILS 20 visibility all Cats to 3/8 SM.



MALSR MISSED APPROACH: Climb to 6100 then climbing right turn to 9900 on heading 322° and EHK VOR/DME R-278 to BERYL INT/EHK 1.6.5 DME and hold, continue climb-in-hold to 9900.
† Missed approach requires minimum climb of 230 feet per NM to 7300.

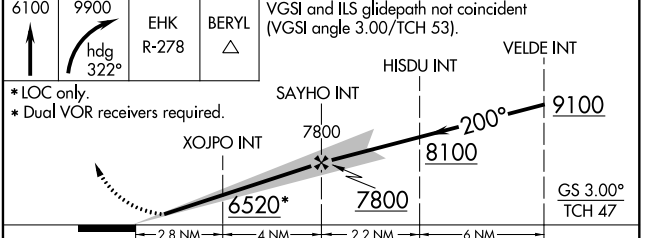
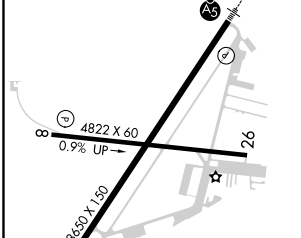
ASOS 119.025	SALT LAKE CITY CENTER 125.575 379.275	UNICOM 123.0 (CTAF)
------------------------	---	-------------------------------



SW-4, 10 SEP 2020 to 08 OCT 2020

SW-4, 10 SEP 2020 to 08 OCT 2020

ELEV 5622	TDZE 5600
-----------	-----------



CATEGORY	A	B	C	D
S-ILS 20 †		5820-1/2	220 (200-1/2)	
S-ILS 20 #		5868-1/2	268 (300-1/2)	
S-LOC 20	5960-1/2	360 (400-1/2)	5960-5/8	360 (400-5/8)
CIRCLING	6000-1 378 (400-1)	6100-1 478 (500-1)	6120-1 1/2 498 (500-1 1/2)	6180-2 558 (600-2)

FAF to MAP 6.8 NM					
Knots	60	90	120	150	180
Min:Sec	6:48	4:32	3:24	2:43	2:16