

WAAS CH 69240 W04A	APP CRS 038°	Rwy Idg 9207 TDZE 4151 Apt Elev 4199
--	------------------------	---

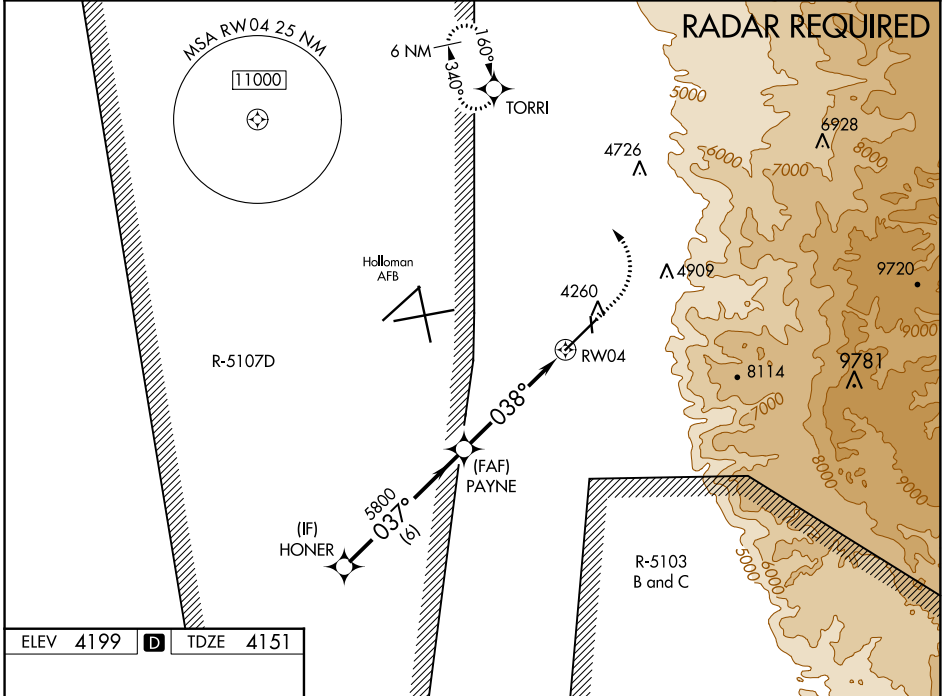
RNAV (GPS) RWY 4

ALAMOGORDO-WHITE SANDS RGNL (A.I.M)

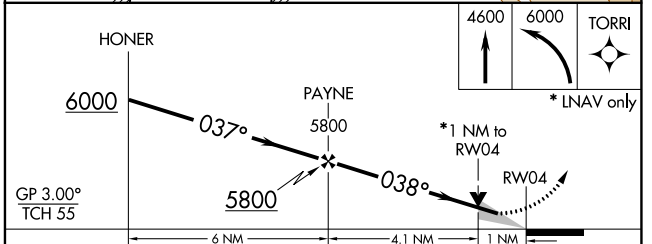
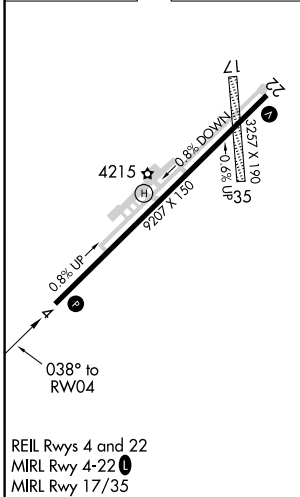
⚠ Circling NA to Rwy's 17 and 35. For uncompensated Baro-VNAV systems, LNAV/VNAV NA below -23°C (-9°F) or above 49°C (121°F). Circling NA southeast of Rwy 4-22.
⚠ DME/DME RNP-0.3 NA. Civil aircraft require ATC Clearance prior to entering Restricted Area 5107D. Procedure NA when Holloman Approach Control closed.

MISSED APPROACH: Climb to 4600 then climbing left turn to 6000 direct TORRI and hold.

AWOS-3 127.825	HOLLOMAN APP CON ★ 120.6 269.225	ALBUQUERQUE CENTER 132.65 257.6 (When tower closed)	UNICOM 122.8 (CTAF) ⓪
--------------------------	--	--	--



ELEV 4199	D	TDZE 4151
-----------	----------	-----------



CATEGORY	A	B	C	D
LPV DA		4401-7/8	250 (300-7/8)	
LNAV/VNAV DA		4444-1	293 (300-1)	
LNAV MDA		4500-1	349 (400-1)	
C CIRCLING	4680-1 481 (500-1)	4720-1 521 (600-1)	4860-1 3/4 661 (700-1 3/4)	5300-3 1101 (1200-3)

SW-1, 10 SEP 2020 to 08 OCT 2020

SW-1, 10 SEP 2020 to 08 OCT 2020