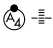


WAAS CH <b>70418</b> <b>W05A</b>	APP CRS <b>047°</b>	Rwy ldg TDZE Apt Elev	<b>5500</b> <b>309</b> <b>333</b>
--	------------------------	-----------------------------	---

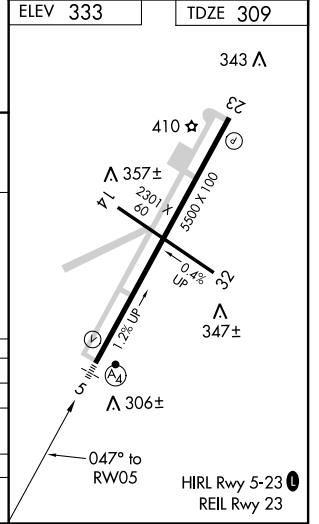
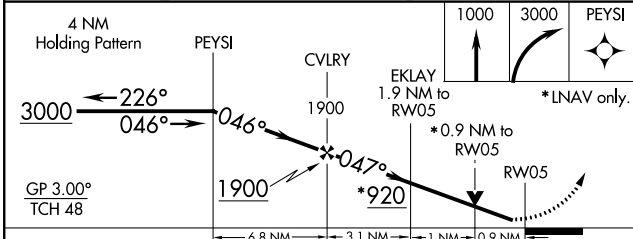
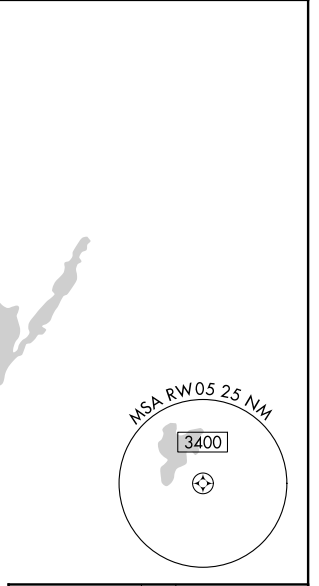
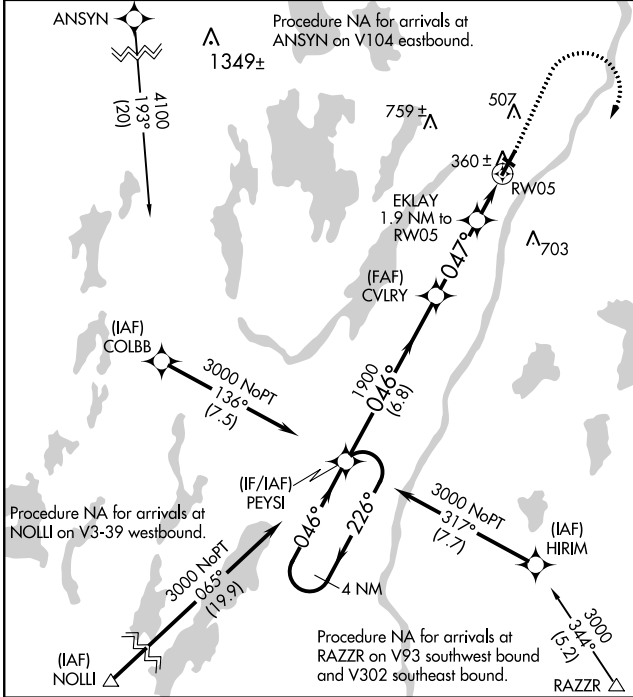
# RNAV (GPS) RWY 5

WATERVILLE ROBERT LAFLEUR (WVL)

⚠ Inop table does not apply to LPV. For uncompensated Baro-VNAV systems, LNAV/VNAV NA below -15°C (5°F) or above 54°C (130°F). DME/DME RNP-0.3 NA. Helicopter visibility reduction below 3/4 SM NA. Baro-VNAV and VDP NA when using Augusta altimeter setting. When local altimeter setting not received, use Augusta altimeter setting and increase all DA 35 feet and all MDA 40 feet, increase visibility LNAV/VNAV all Cats 1/8 mile. Night Landing: Rwy 14 NA. For inop MALSF, increase LNAV/VNAV Cat D visibility to 1 mile and LNAV Cats C/D visibility to 3/8 mile. For inop MALSF, when using Augusta altimeter setting, increase LPV all Cats visibility to 3/8 mile, LNAV/VNAV Cat D visibility to 1 1/8 mile, and LNAV Cat D visibility to 1 mile.

MALSF  
 MISSED APPROACH: Climb to 1000 then climbing right turn to 3000 direct PEYSI and hold.

AWOS-3PT <b>118.375</b>	PORTLAND APP CON * <b>128.35 299.2</b>	CLNC DEL <b>124.6 299.2</b>	UNICOM <b>122.7 (CTAF) 0</b>
----------------------------	---	--------------------------------	---------------------------------



CATEGORY	A	B	C	D
LPV DA		509-3/4	200 (200-3/4)	
LNAV/VNAV DA		588-3/4	279 (300-3/4)	
LNAV MDA		620-3/4	311 (400-3/4)	
CIRCLING	860-1	527 (600-1)	860-1 1/2 527 (600-1 1/2)	900-2 567 (600-2)

NE-1, 10 SEP 2020 to 08 OCT 2020

NE-1, 10 SEP 2020 to 08 OCT 2020