

RNAV (GPS) RWY 34

APCH CRS	Rwy ldg	4702
345°	TDZE	273
	Arpt Elev	273

AL-2334 [USAF]

TIN CITY LRSS (PATC)

▼ Night operations not authorized
 DME/DME RNP - 0.3 NA
 *Circling not authorized W of runway 16/34

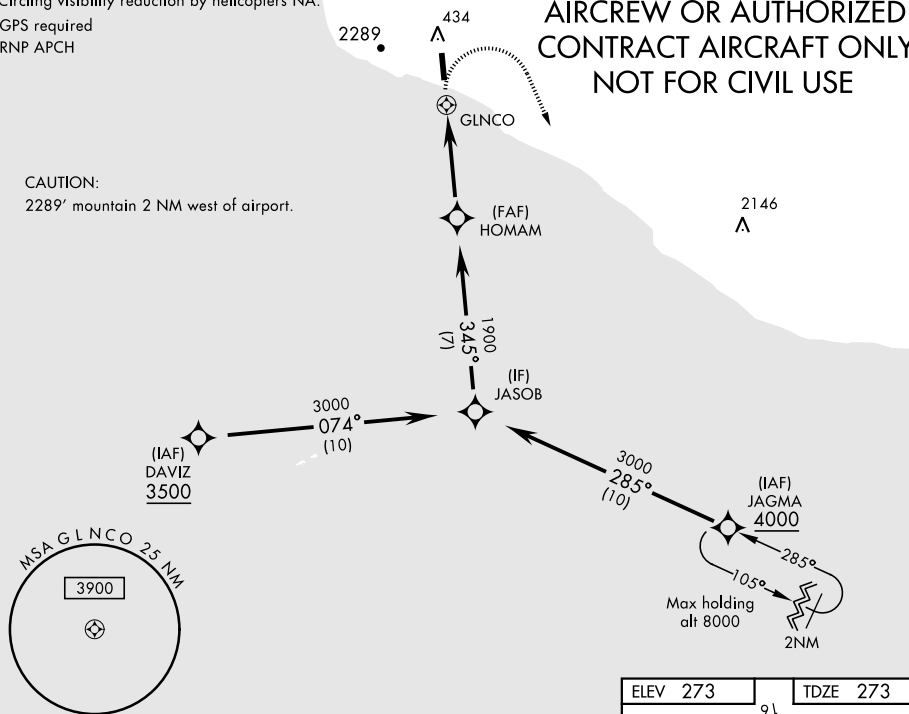
 MISSED APPROACH: Climb to 1500 then climbing right turn to 4000 direct JAGMA and hold.

ANCHORAGE CENTER 133.3 290.4	TIN CITY RCO (NOME RADIO) 122.6	UNICOM 126.2 (CTAF)
--	---	-------------------------------

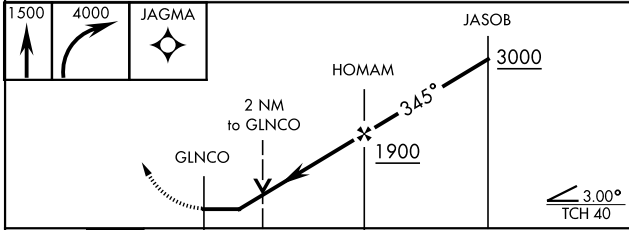
Uncontrolled airspace below 700' AGL within 7 NM of Tin City airport.
 Circling visibility reduction by helicopters NA.
 GPS required
 RNP APCH

MILITARY CERTIFIED
 AIRCREW OR AUTHORIZED
 CONTRACT AIRCRAFT ONLY
 NOT FOR CIVIL USE

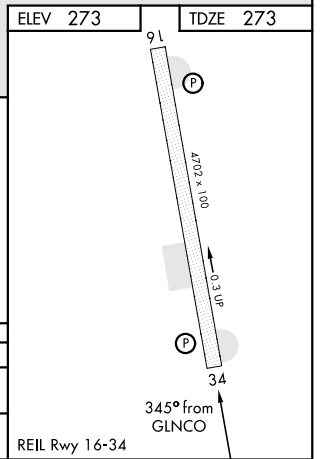
CAUTION:
 2289' mountain 2 NM west of airport.



EMERG SAFE ALT 100 NM 6800



CATEGORY	A		B		C		D	
	LNVA MDA	1260-1¼ 987 (1000-1¼)	1260-1½ 987 (1000-1½)	1280-3	1007	1280-3	1007	(1100-3)
CIRCLING*	1260-1¼ 987 (1000-1¼)	1260-1½ 987 (1000-1½)	1280-3	1007	1280-3	1007	(1100-3)	



RNAV (GPS) RWY 34

AK, 10 SEP 2020 to 05 NOV 2020

AK, 10 SEP 2020 to 05 NOV 2020