

# NDB/DME RWY 34

NDB/DME TNC <b>347</b> Chan <b>119 (Y)</b>	APCH CRS <b>339°</b>	Rwy ldg THRE <b>242</b> Arprt Elev <b>273</b>	<b>4702</b>
--	-------------------------	--	-------------

AL-2334 [USAF]

TIN CITY LRRS (PATC)

▼ \* Circling not authorized W of Rwy 16-34.  
Night operations not authorized.

MISSED APPROACH: Climbing right turn to 3500 intercept TNC 159° bearing to WNGCO and hold. Continue climb-in-hold to 3500.

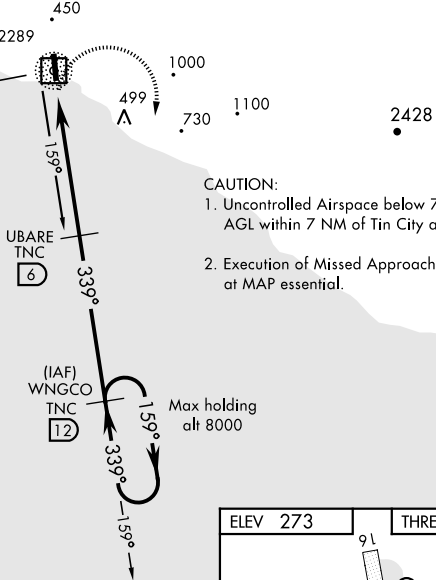
ANCHORAGE CENTER <b>133.3 290.4</b>	TIN CITY RCO (NOME RADIO) <b>122.6</b>	UNICOM <b>126.2 (CTAF)</b>
--	---	-------------------------------

## MILITARY CERTIFIED AIRCREWS OR AUTHORIZED CONTRACT AIRCRAFT ONLY

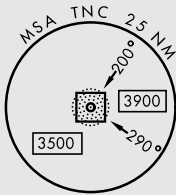
### NOT FOR CIVIL USE

CAUTION:  
2289' mountain 2 NM West of NDB/DME.

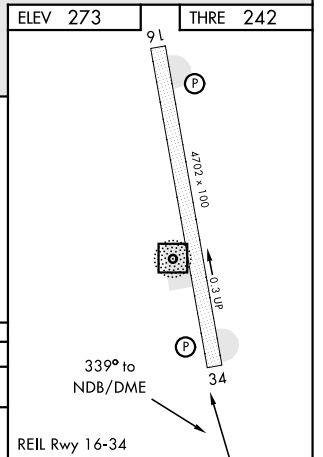
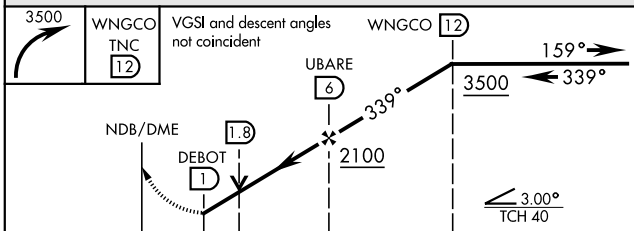
TIN CITY  
347 TNC ≡ :- .  
Chan 119(Y)



- CAUTION:
1. Uncontrolled Airspace below 700' AGL within 7 NM of Tin City airport.
  2. Execution of Missed Approach at MAP essential.



EMERG SAFE ALT 100 NM 6800



CATEGORY	A		B	C		D
S-34	780-1	538 (600-1)		780-1½	538 (600-1½)	
☐ CIRCLING*	780-1	507 (600-1)		780-1½ 507 (600-1½)	1120-2¾ 847 (900-2¾)	

# NDB/DME RWY 34