

HONPO TWO DEPARTURE (OBSTACLE) (RNAV) (HONPO2•JIPAK)

TIN CITY, ALASKA

UNICOM (CTAF)

126.2

TIN CITY RCO (NOME RADIO)

122.6

ANCHORAGE CENTER

133.3 290.4

SI-2334 [USAF]

MILITARY CERTIFIED  
AIRCREWS OR AUTHORIZED  
CONTRACT AIRCRAFT ONLY

NOT FOR CIVIL USE

RNAV 1

DME/DME RNP - 0.3 NA

Night operations not authorized

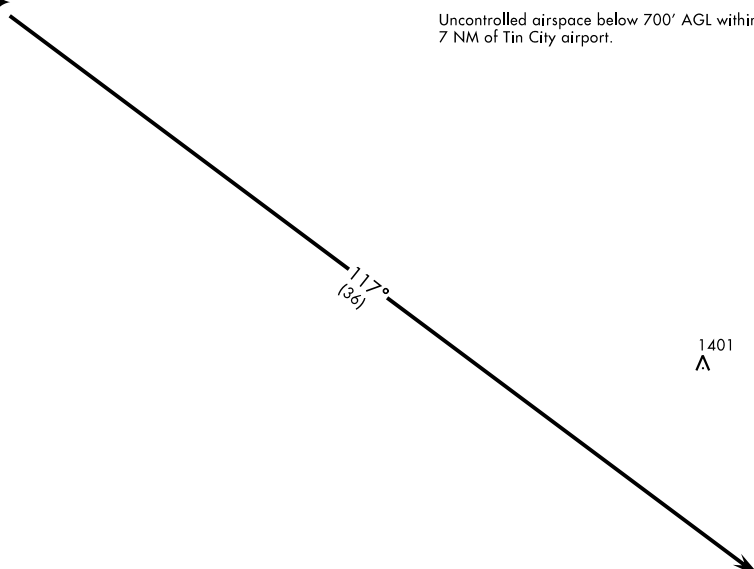
CAUTION: 2289' mountain 2 NM west of airport.

Uncontrolled airspace below 700' AGL within  
7 NM of Tin City airport.

2289



HONPO



1401  
A

JIPAK

GPS REQUIRED



TAKE-OFF RWY 16: Climb to 7000 direct HONPO, then climbing left turn,  
track 117° to JIPAK.

TAKE-OFF RWY 34: NA