

ANCHORAGE, ALASKA

TACAN RWY 6

TACAN Chan 81	EDF	APCH CRS 062°	Rwy ldg 10,000
			TDZE 174
			Arprt Elev 213

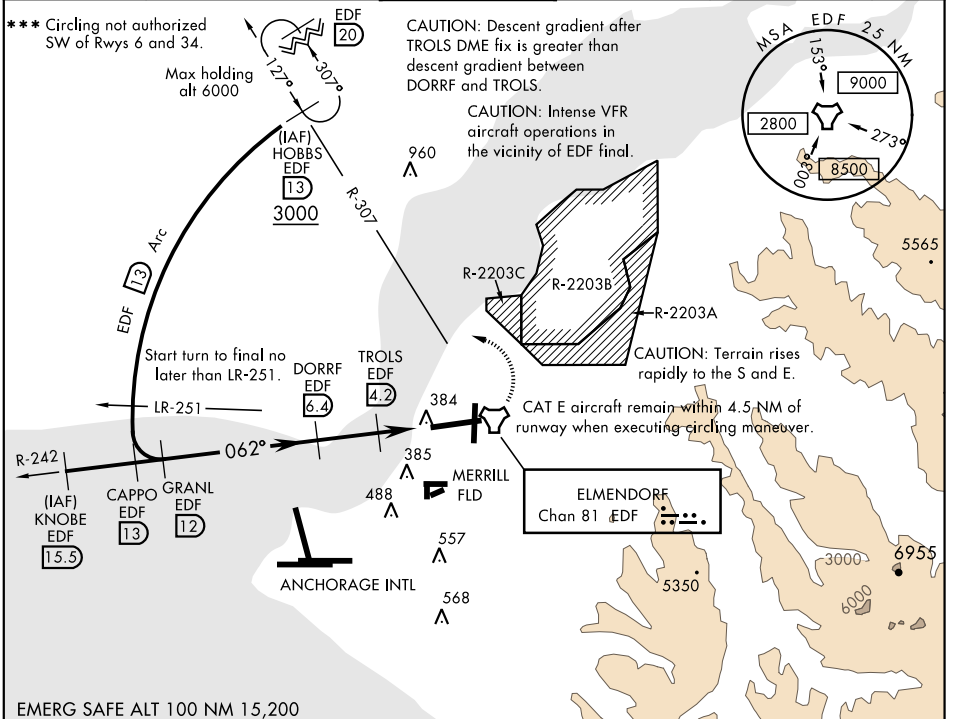
AL-1196 [USAF]

ELMENDORF AFB (PAED)

▼ * When ALS inop, increase CAT AB RVR to 55, vis to 1 mile, CAT CDE vis to 1 3/8 miles.
 ** Circling not authorized S of Rwy 6-24.

ALSF-1 (A1) MISSED APPROACH: Climbing left turn to 3000 via EDF R-307 to HOBBS and hold. Continue climb in hold to 3000.

ATIS ★ 124.3 273.5	ANCHORAGE APP CON North 118.6 290.5 South 123.8 259.3	ELMENDORF TOWER 127.2 352.05	GND CON 121.8 275.8	CLNC DEL 128.8 306.925	PAR
------------------------------	---	--	-------------------------------	----------------------------------	-----

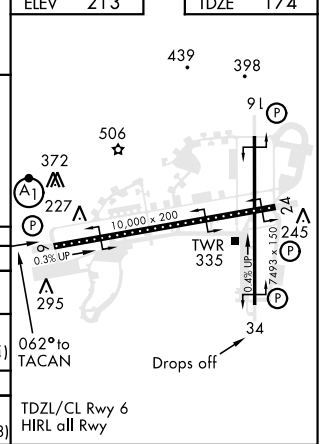


AK, 10 SEP 2020 to 05 NOV 2020

AK, 10 SEP 2020 to 05 NOV 2020

EMERG SAFE ALT 100 NM 15,200

KNOBE R-242 (15.5) HOBBS R-307 (13) CAPPO R-242 (13) GRANL (12) DORRF (6.4) TROLS (4.2) COOLE (2.8)	3000	HOBBS	ELEV 213	TDZE 174	
	EDF R-307				
CATEGORY S-6 * CIRCLING ** RWY 34 CIRCLING MINIMUMS CIRCLING ***	A	B	C	D	E
S-6 *	640/24	466 (500-1/2)	640/50	466 (500-1)	
CIRCLING **	840-1	627 (700-1)	840-1 3/4 627 (700-1 3/4)	840-2 627 (700-2)	960-2 3/4 747 (800-2 3/4)
CIRCLING ***	840-1	627 (700-1)	980-2 1/4 767 (800-2 1/4)	980-2 1/2 767 (800-2 1/2)	1420-3 1207 (1300-3)



ANCHORAGE, ALASKA 61°15'N-149°48'W ELMENDORF AFB (PAED)

Amdt 1 15SEP16
TERPS

TACAN RWY 6