

ANCHORAGE, ALASKA

RNAV (GPS) RWY 6

APCH CRS	Rwy Idg	10,000
062°	TDZE	175
	Arprt Elev	213

AL-1196 (USAF)

ELMENDORF AFB (PAED)

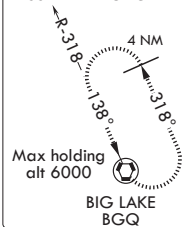
V * When ALS inop increase vis to 1 3/8 miles.
 ** When ALS inop increase CAT AB RVR to 55, vis to 1 mile, CAT CD vis to 1 3/8 miles.
 *** Circling NA S of RWY 34 and 6.

ALSF-1 MISSED APPROACH: Climb to 800 then climbing left turn to 3000 direct BGQ and hold.

ATIS★	ANCHORAGE APP CON/DEP CON	TOWER	GND CON	CLNC DEL	ASR/PAR
124.3 273.5	118.6 290.5	127.2 352.05	121.8 275.8	128.8 306.925	

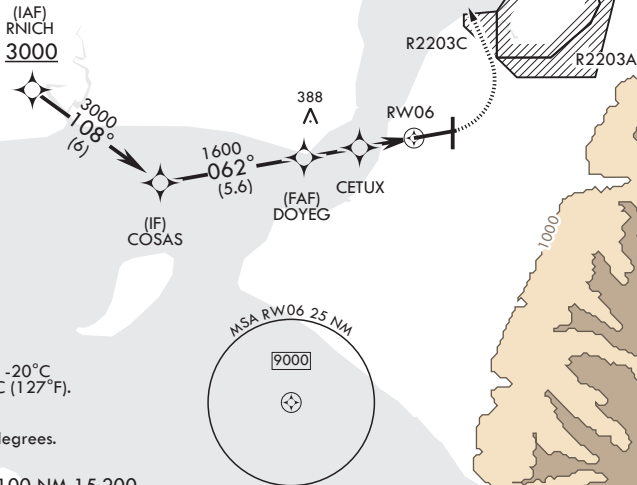
DME/DME RNP-0.3 NA
 GPS REQUIRED
 RNP APCH

MISSED APPROACH



CAUTION: Intense VFR aircraft in the vicinity of Final Approach.

CAUTION: Terrain rises rapidly to the South and East.



For uncompensated Baro-VNAV systems, Procedure NA below -20°C (-4°F) or above 53°C (127°F).

Course offset 0.04 degrees.

EMERG SAFE ALT 100 NM 15,200

RNICH	COSAS	VGSI and RNAV glidepath not coincident.	800	3000	BGQ	ELEV 213	TDZE 175
3000	3000	DOYEG	↑	↻	⊙		
108°	062°						
GP 3.04°		CETUX					
TCH 57		1600	↑ 900	↑ 1.2 NM to RW06			
CATEGORY	A	B	C	D			
LNAV/VNAV DA*	605/50		431	(400-1)			
LNAV MDA**	640/24	466 (500-1/2)	640/50	466 (500-1)			
CIRCLING***	800-1	587 (600-1)	920-2 707 (800-2)	920-2 1/4 707 (800-2 1/4)			

062° to RW06

0.3% UP

10,000 x 200

TWR

91

493 x 150

24

34

0.4% DOWN

ANCHORAGE, ALASKA
 Amdt 1 08NOV18

61°15'N - 149°48'W

ELMENDORF AFB (PAED)

RNAV (GPS) RWY 6

AK, 10 SEP 2020 to 05 NOV 2020

AK, 10 SEP 2020 to 05 NOV 2020