

APP CRS	Rwy Idg	N/A
043°	TDZE	N/A
	Apt Elev	54

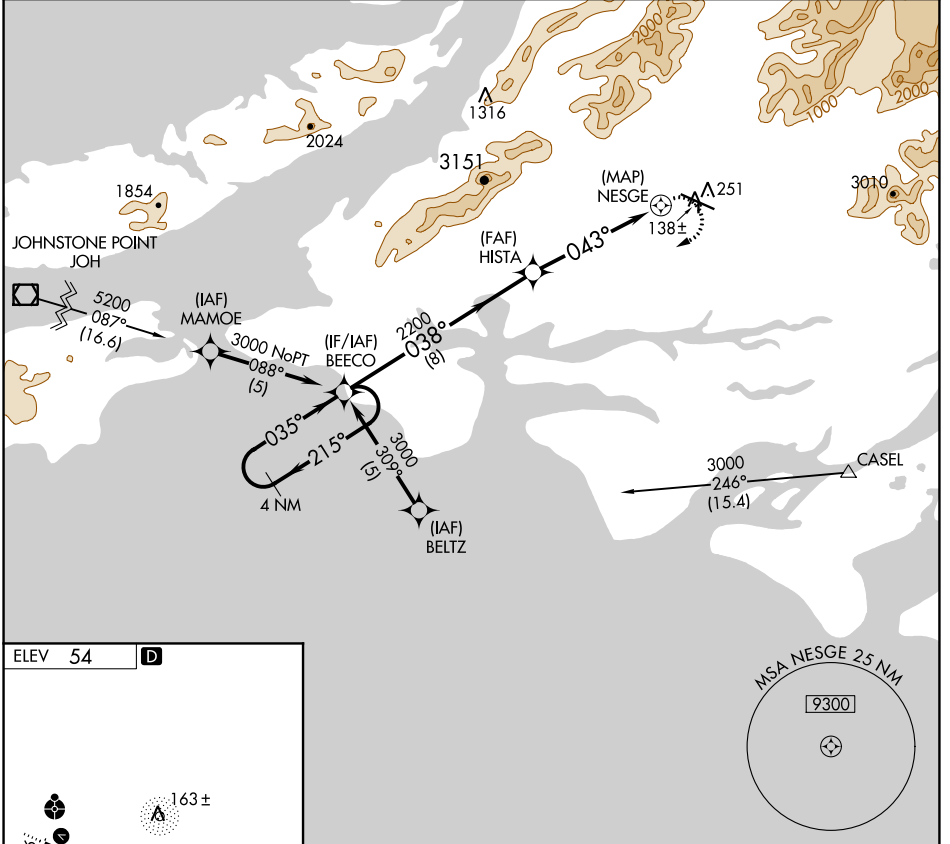
RNAV (GPS)-B

MERLE K (MUDHOLE) SMITH (CDV)(PACV)

NA DME/DME RNP-0.3 NA. Circling to Rwy 16/34 NA at night. When local altimeter setting not received use Middleton Island altimeter setting and increase all MDA 180 feet. Circling NA north of Rwy 9/27. Helicopter visibility reduction below 1 SM not authorized.

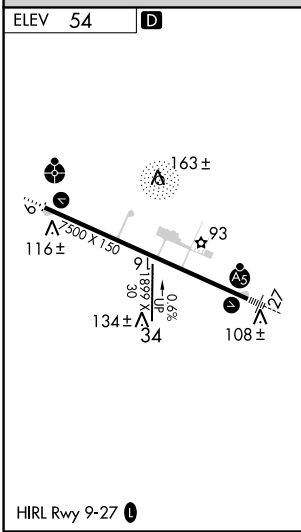
MISSED APPROACH: Climbing right turn to 3000 direct BEECO and hold.

ASOS 134.8	ANCHORAGE CENTER 119.3 133.6 269.4	JUNEAU RADIO 122.2 123.6 (CTAF)
----------------------	--	---



AK, 10 SEP 2020 to 05 NOV 2020

AK, 10 SEP 2020 to 05 NOV 2020



4 NM Holding Pattern	BEECO			
3000 ← 215°		→ 035°		
3000		2200		
8 NM		5.2 NM		
CATEGORY	A	B	C	D
CIRCLING	500-1 446 (500-1)	520-1 466 (500-1)	520-1½ 466 (500-1½)	620-2 566 (600-2)

RNAV (GPS)-B