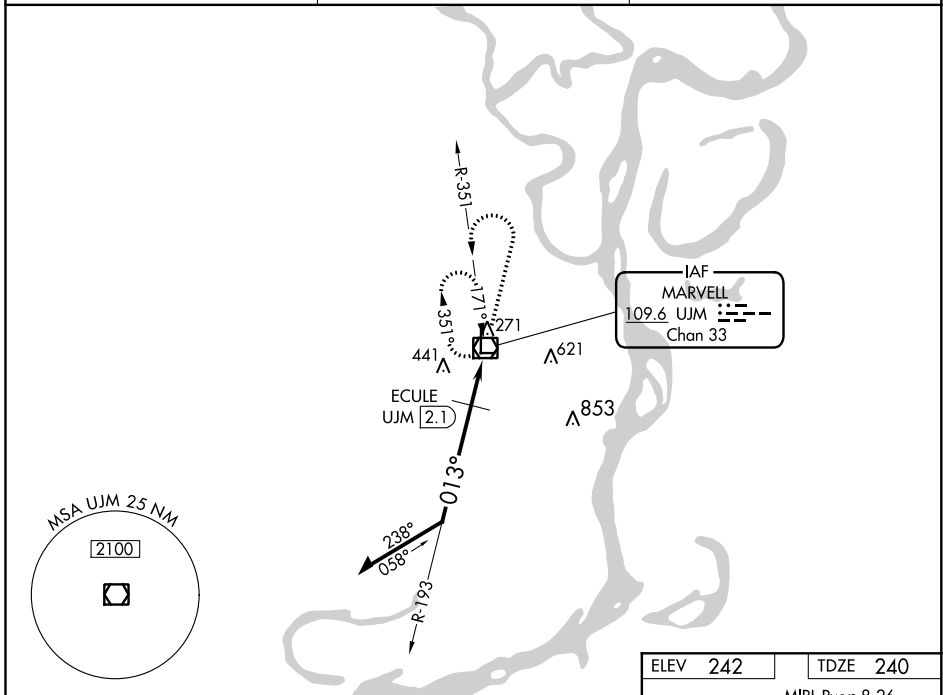


VOR/DME UJM <b>109.6</b> Chan <b>33</b>	APP CRS <b>013°</b>	Rwy Idg <b>4996</b> TDZE <b>240</b> Apt Elev <b>242</b>
---	------------------------	---

**VOR RWY 35**  
THOMPSON-ROBBINS (HEE)

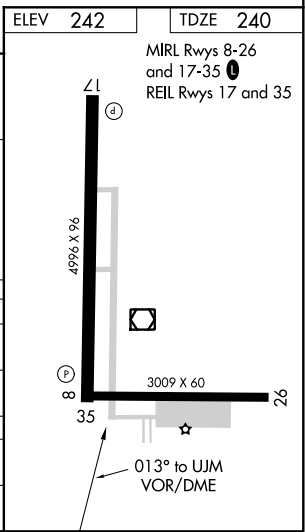
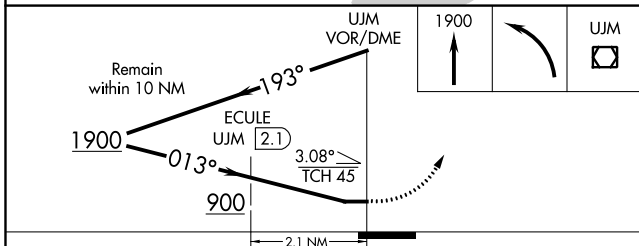
<p>▼ Circling to Rwy 8-26 NA at night. ▲ NA Use Tunica, MS altimeter setting.</p>	<p>MISSED APPROACH: Climb to 1900 then left turn direct UJM VOR/DME and hold.</p>
---	---

<p>UTA AWOS-3 <b>118.075</b></p>	<p>MEMPHIS CENTER <b>135.3 335.8</b></p>	<p>UNICOM <b>122.8 (CTAF)</b></p>
--------------------------------------	--	---------------------------------------



SC-1, 10 SEP 2020 to 08 OCT 2020

SC-1, 10 SEP 2020 to 08 OCT 2020



CATEGORY	A	B	C	D
S-35	900-1	660 (700-1)	900-1 $\frac{7}{8}$	660 (700-1 $\frac{7}{8}$ )
☑ CIRCLING	900-1	658 (700-1)	980-2 738 (800-2)	980-2 $\frac{1}{4}$ 738 (800-2 $\frac{1}{4}$ )
<b>ECULE FIX MINIMUMS</b>				
S-35	700-1	460 (500-1)	700-1 $\frac{3}{8}$	460 (500-1 $\frac{3}{8}$ )
☑ CIRCLING	820-1	578 (600-1)	980-2 738 (800-2)	980-2 $\frac{1}{4}$ 738 (800-2 $\frac{1}{4}$ )