

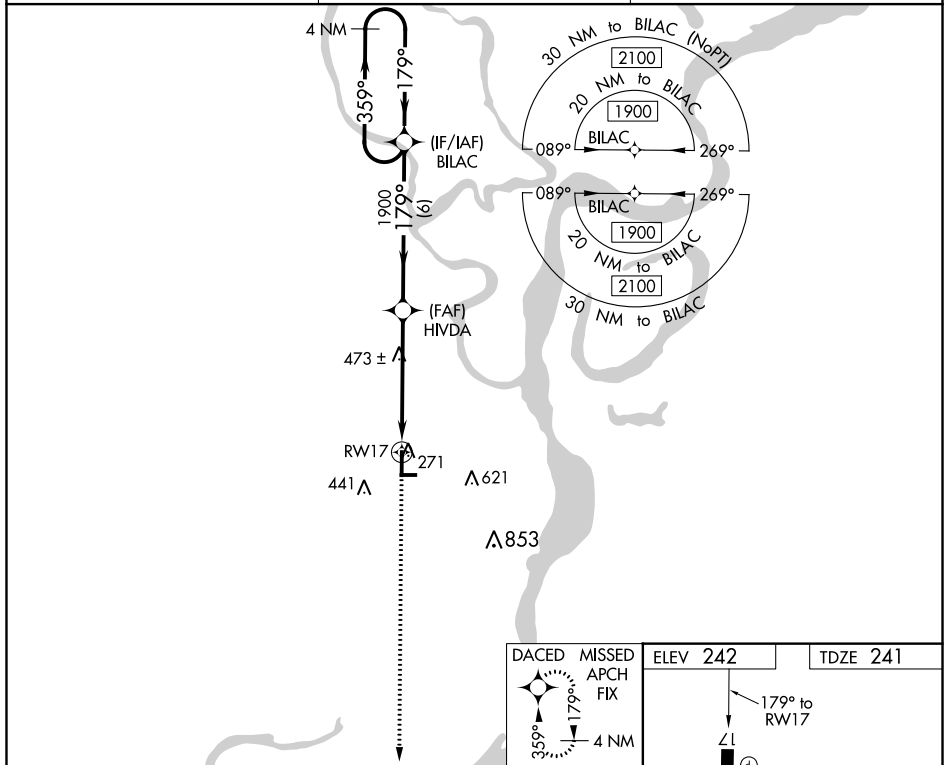
WAAS CH <b>86941</b> <b>W17A</b>	APP CRS <b>179°</b>	Rwy Idg TDZE <b>241</b> Apt Elev <b>242</b>	<b>4996</b>
----------------------------------------	------------------------	---------------------------------------------------	-------------

# RNAV (GPS) RWY 17

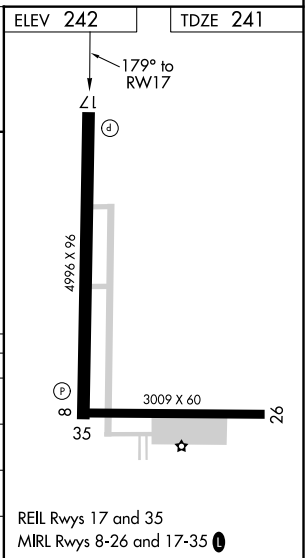
THOMPSON-ROBBINS (HEE)

**⚠** Circling to Rwy 8-26 NA at night. Baro-VNAV NA. DME/DME RNP-0.3 NA.  
**⚠** NA Use Tunica, MS altimeter setting. Rwy 17 helicopter visibility reduction below ¾ SM NA. MISSED APPROACH: Climb to 1900 direct DACED and hold.

UTA AWOS-3 <b>118.075</b>	MEMPHIS CENTER <b>135.3 335.8</b>	UNICOM <b>122.8 (CTAF) 0</b>
------------------------------	--------------------------------------	---------------------------------



1900	DACED	HIVDA 1900	BILAC	4 NM Holding Pattern
↑	⊙			
RWY 17		← 179°	← 179°	→ 359° → 1900
		↘ 1900		← 179°
				GP 3.00° TCH 45
		5.1 NM	6 NM	
CATEGORY	A	B	C	D
LPV DA		538-1	297 (300-1)	
LNAV/VNAV DA		577-1	336 (400-1)	
LNAV MDA	780-1	539 (600-1)	780-1½	539 (600-1½)
<b>C</b> CIRCLING	820-1	578 (600-1)	980-2 738 (800-2)	980-2¼ 738 (800-2¼)



SC-1, 10 SEP 2020 to 08 OCT 2020

SC-1, 10 SEP 2020 to 08 OCT 2020

REIL Rwy 17 and 35  
MIRL Rwy 8-26 and 17-35 0