

WAAS CH 40005 W32A	APP CRS 320°	Rwy Idg TDZE Apt Elev	3576 671 672
--	------------------------	-----------------------------	---

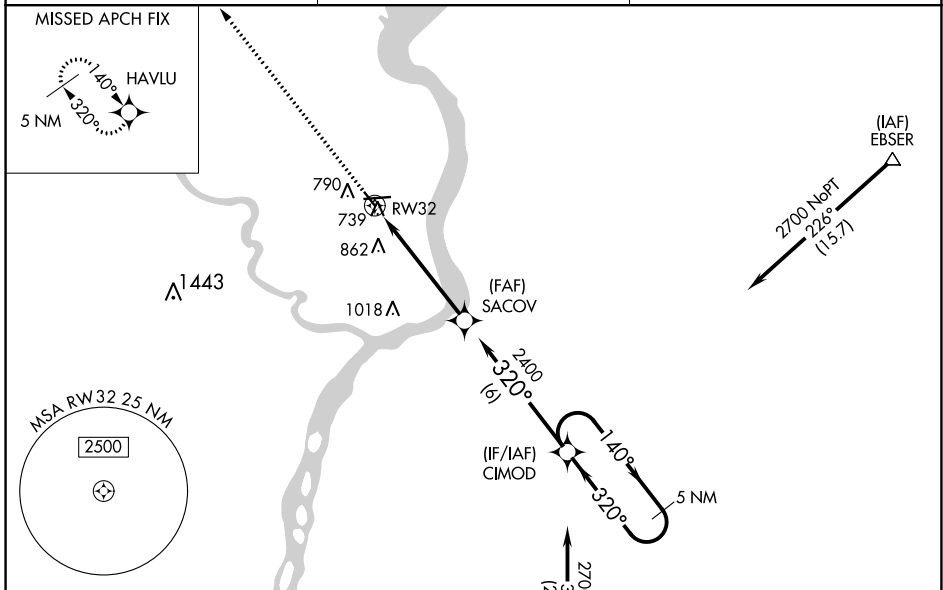
RNAV (GPS) RWY 32

KEOKUK MUNI (EOK)

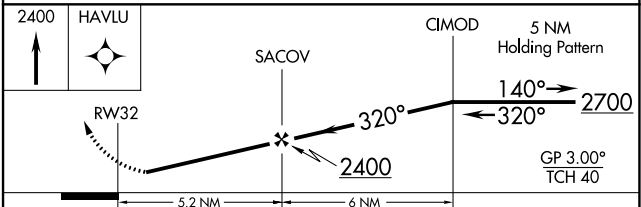
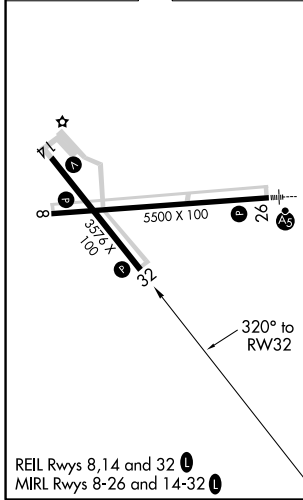
⚠ DME/DME RNP -0.3 NA. Helicopter visibility reduction below 1 SM not authorized.
 ⚠ For uncompensated Baro-VNAV systems, LNAV/VNAV NA below -16°C (4°F) or above 54°C (130°F). When local altimeter setting not received, use Burlington altimeter setting and increase all DA 59 feet and all MDA 60 feet, increase LNAV/VNAV Cat A/B/C and LNAV and Circling Cat C visibility 1/4 mile. Baro-VNAV NA when using Burlington altimeter setting. Rwy 32 Straight-in and Circling minimums NA at night.

MISSED APPROACH: Climb to 2400 direct HAVLU and hold.

AWOS-3 118.375	KANSAS CITY CENTER 126.225 317.775	UNICOM 122.8 (CTAF) 1
--------------------------	--	---------------------------------



ELEV 672	TDZE 671
----------	----------



CATEGORY	A	B	C	D
LPV DA	921-1	250 (300-1)		NA
LNAV/VNAV DA	1163-1 3/4	492 (500-1 3/4)		NA
LNAV MDA	1120-1	449 (500-1)	1120-1 1/4 449 (500-1 1/4)	NA
CIRCLING	1180-1	508 (600-1)	1220-1 1/2 548 (600-1 1/2)	NA

NC-3, 10 SEP 2020 to 08 OCT 2020

NC-3, 10 SEP 2020 to 08 OCT 2020