

WAAS CH <b>45505</b> <b>W26A</b>	APP CRS <b>264°</b>	Rwy Idg TDZE Apt Elev	<b>5300</b> <b>671</b> <b>672</b>
--	------------------------	-----------------------------	---

# RNAV (GPS) RWY 26

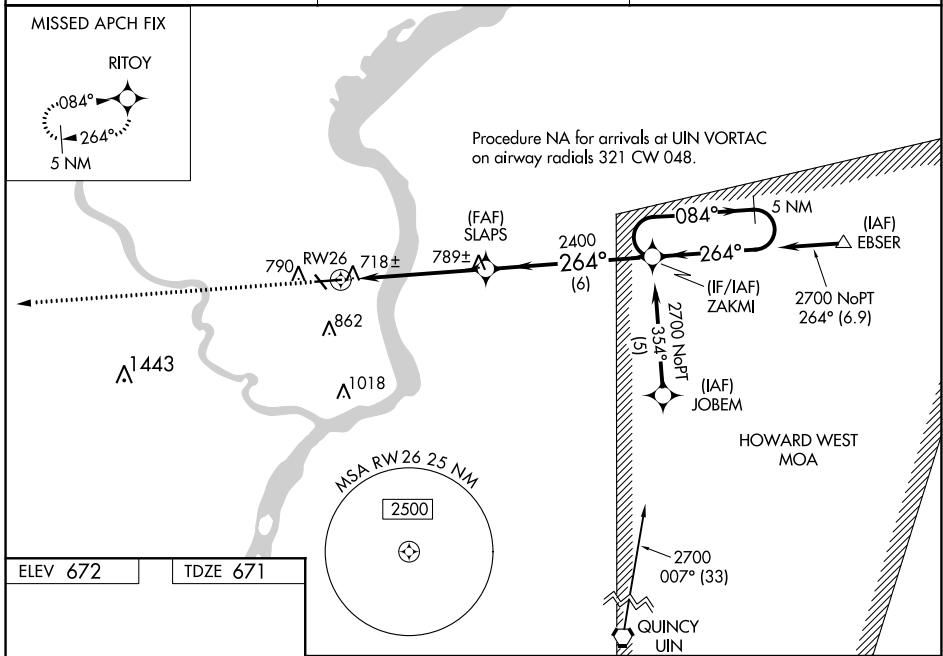
KEOKUK MUNI (EOK)

**⚠** DME/DME RNP -0.3 NA. For uncompensated Baro-VNAV systems, LNAV/VNAV NA below -1.6°C (4°F) or above 54°C (130°F). When local altimeter setting not received, use Burlington altimeter setting and increase all DA 59 feet and all MDA 60 feet, increase Circling Cat C visibility ½ mile. For inoperative MALSRL, increase LNAV/VNAV and LNAV Cat A/B/C visibility to 1 mile. For inoperative MALSRL when using Burlington altimeter, setting, increase LNAV Cat A/B visibility to 1 mile. VDP and Baro-VNAV NA when using Burlington altimeter setting. For inoperative MALSRL, increase LPV, LNAV/VNAV and LNAV all Cats visibility to 1 mile. Circling to Rwy 32 NA at night.

**MALSRL**

**MISSED APPROACH:**  
Climb to 2700 direct RITOY and hold.

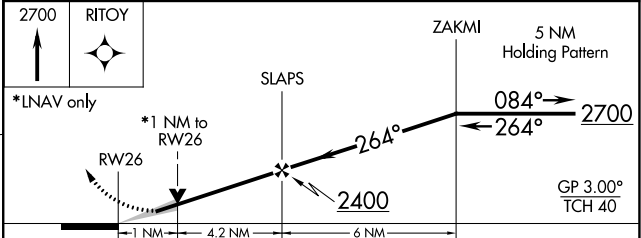
<b>AWOS-3</b> <b>118.375</b>	<b>KANSAS CITY CENTER</b> <b>126.225 317.775</b>	<b>UNICOM</b> <b>122.8 (CTAF) ①</b>
---------------------------------	---	--



ELEV 672 TDZE 671

264° to RW26  
5500 X 100  
357° X 100  
31

REIL Rwy 8, 14 and 32 ①  
MIRL Rwy 8-26 and 14-32 ①



CATEGORY	A	B	C	D
LPV DA	925-¾	254 (300-¾)		NA
LNAV/VNAV DA	979-¾	308 (400-¾)		NA
LNAV MDA	1040-¾	369 (400-¾)		NA
CIRCLING	1180-1	508 (600-1)	1220-1½ 548 (600-1½)	NA

NC-3, 10 SEP 2020 to 08 OCT 2020

NC-3, 10 SEP 2020 to 08 OCT 2020