

WAAS CH <b>53406</b> <b>W26A</b>	APP CRS <b>258°</b>	Rwy Idg <b>12197</b> TDZE <b>932</b> Apt Elev <b>944</b>
--	------------------------	--

# RNAV (GPS) Y RWY 26R

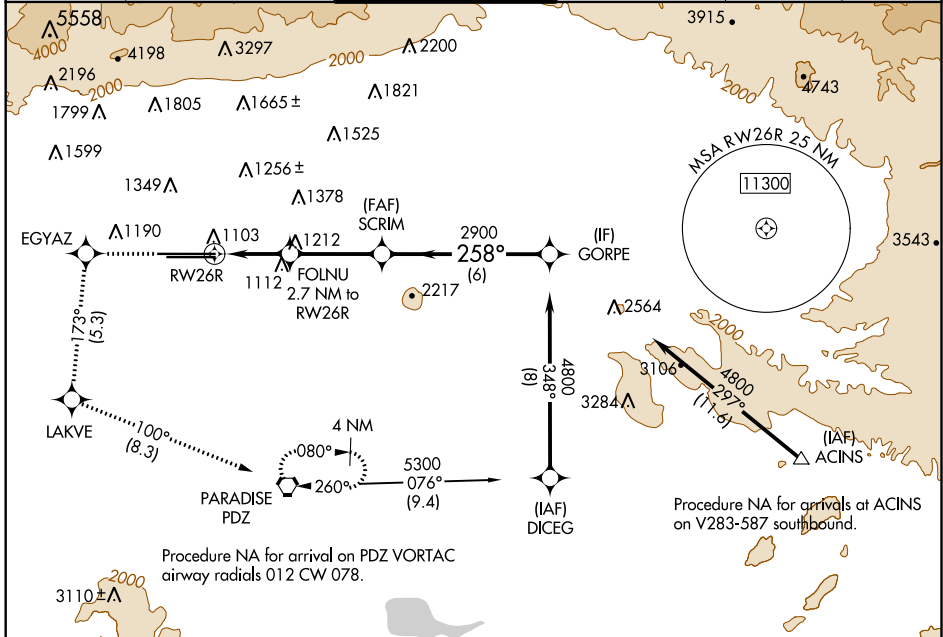
ONTARIO INTL (ONT)

**⚠** For uncompensated Baro-VNAV systems, procedure NA below 2°C (36°F) or above 54°C (130°F). Circling NA north of Rwy 8L-26R. DME/DME RNP-0.3 NA.

MALS R

MISSED APPROACH: Climb to 3700 direct EGYAZ and on track 173° to LAKVE and on track 100° to PDZ VORTAC and hold.

D-ATIS <b>124.25</b>	SOCAL APP CON <b>127.0 318.2</b>	ONTARIO TOWER <b>120.6 360.775</b>	GND CON <b>121.9 257.8</b>	CLNC DEL <b>118.1</b>	CPDLC
-------------------------	-------------------------------------	---------------------------------------	-------------------------------	--------------------------	-------

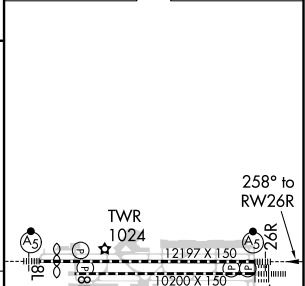
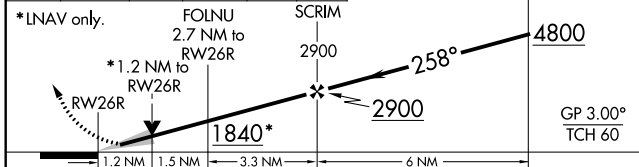


SW-3, 10 SEP 2020 to 08 OCT 2020

SW-3, 10 SEP 2020 to 08 OCT 2020

ELEV <b>944</b>	<b>D</b>	TDZE <b>932</b>
-----------------	----------	-----------------

3700	EGYAZ	LAKVE	PDZ	VGSI and RNAV glidepath not coincident (VGSI Angle 3.00/TCH 75).
↑	✧ tr 173°	✧ tr 100°	⬡	GORPE



CATEGORY	A	B	C	D
LPV DA		1132/24	200 (200-½)	
LNAV/VNAV DA		1264/30	332 (400-⅝)	
LNAV MDA	1380/24	448 (500-½)	1380/45	448 (500-⅞)
<b>C</b> CIRCLING	1400-1	456 (500-1)	1500-1½ 556 (600-1½)	1540-2 596 (600-2)

TDZ/CL Rwys 8L and 26L  
HIRL Rwys 8L-26R and 8R-26L